

DEAL POST TEST 2019-20 - SCHOOL REPORT CARD

PONDY
DIS Z3

34020200101 GPS ABISHEGAPAKKAM

All Grades represent the following scorings in % *

GRADE A - >75	* School Status Grade represents the total enrollment of the school (Not %)
GRADE B - 51 TO 75	
GRADE C - 26 TO 50	
GRADE D - 10 TO 25	
GRADE E - <10	

Note: The Values given in the brackets denote the difference between the Pre and Post Test Scores.
(For Example: If the Pre-Test Grade is 'C' and the Post-Test Grade is 'A', then the progress is +2)

SCHOOL GRADE - AB

Status Gr. A (0) Performance Gr. B(+1)

OVERALL PERFORMANCE GRADES

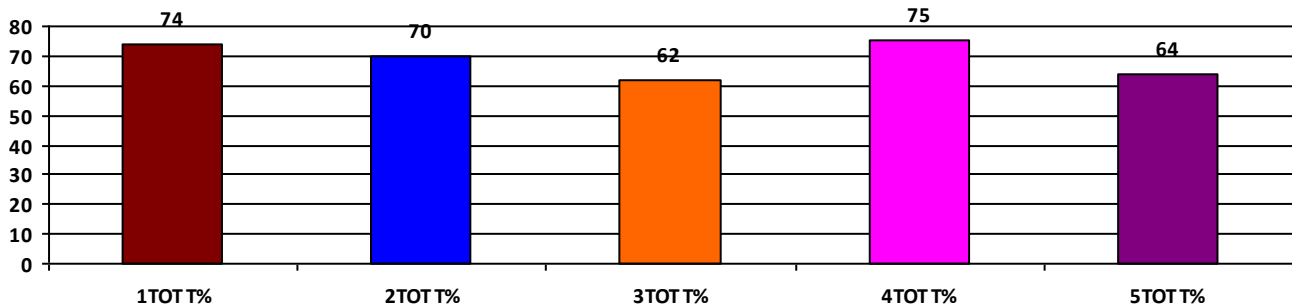
	Boys	Girls	Total
SCHOOL GR.	B	B	B
Diff. to Pre-Test	(+1)	(0)	(+1)
DIST. GR.	B	B	B
STATE GR.	B	B	B

CLASSWISE APPEARED

DETAILS	I STD	II STD	III STD	IV STD	V STD
BOYS	13	22	8	18	21
GIRLS	14	12	18	16	14
TOTAL	27	34	26	34	35
Diff. to Pre-Test	(+3)	(+1)	(+3)	(+2)	(+2)

CLASSWISE PERFORMANCE GRADES (% of marks)

DETAILS	I STD	II STD	III STD	IV STD	V STD
%	74	70	62	75	64
SCHOOL GR.	B	B	B	B	B
Diff. to Pre-Test	(0)	(+1)	(+1)	(+1)	(0)
DIST. GR.	A	B	B	B	B
STATE GR.	A	B	B	B	B



GRADEWISE PERFORMANCE (NO. OF STUDENTS)

ENGLISH	1 Std	2 Std	3 Std	4 Std	5 Std	TAMIL	1 Std	2 Std	3 Std	4 Std	5 Std
GR. A	15	10	10	14	19	GR. A	15	21	13	24	13
GR. B	5	16	7	11	8	GR. B	8	9	4	8	11
GR. C	6	6	4	9	4	GR. C	4	3	7	2	2
GR. D	1	2	4	0	3	GR. D	0	1	1	0	8
GR. E	0	0	1	0	1	GR. E	0	0	1	0	1

DEAL POST TEST 2019-20 - SCHOOL REPORT CARD

PONDY
DIS Z3

34020200501 **GPS ARANGANUR**

All Grades represent the following scorings in % *

GRADE A - >75	
GRADE B - 51 TO 75	* School Status Grade
GRADE C - 26 TO 50	represents the total
GRADE D - 10 TO 25	enrollment of the
GRADE E - <10	school (Not %)

Note: The Values given in the brackets denote the difference between the Pre and Post Test Scores.
(For Example: If the Pre-Test Grade is 'C' and the Post-Test Grade is 'A', then the progress is +2)

SCHOOL GRADE - AA

Status Gr. A (0)	Performance Gr. A(+1)
------------------	-----------------------

OVERALL PERFORMANCE GRADES

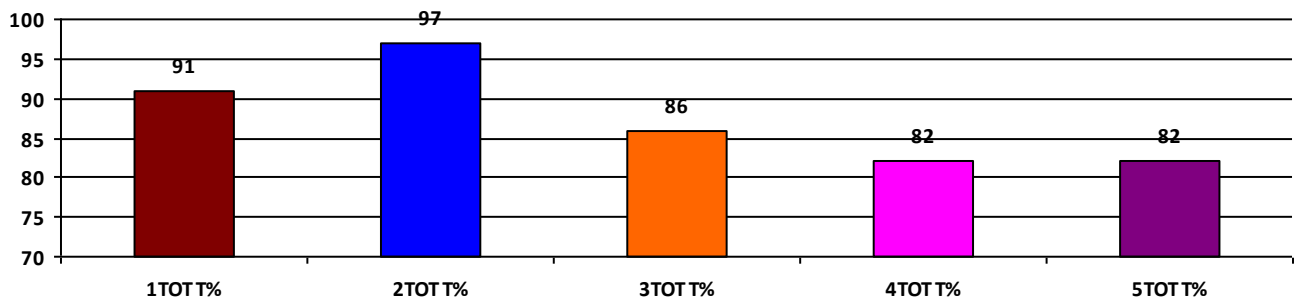
	Boys	Girls	Total
SCHOOL GR.	A	A	A
Diff. to Pre-Test	(+1)	(+1)	(+1)
DIST. GR.	B	B	B
STATE GR.	B	B	B

CLASSWISE APPEARED

DETAILS	I STD	II STD	III STD	IV STD	V STD
BOYS	6	8	10	9	10
GIRLS	6	9	12	9	7
TOTAL	12	17	22	18	17
Diff. to Pre-Test	(-1)	(0)	(0)	(0)	(0)

CLASSWISE PERFORMANCE GRADES (% of marks)

DETAILS	I STD	II STD	III STD	IV STD	V STD
%	91	97	86	82	82
SCHOOL GR.	A	A	A	A	A
Diff. to Pre-Test	(+1)	(+1)	(+1)	(+1)	(+1)
DIST. GR.	A	B	B	B	B
STATE GR.	A	B	B	B	B



GRADEWISE PERFORMANCE (NO. OF STUDENTS)

ENGLISH	1 Std	2 Std	3 Std	4 Std	5 Std	TAMIL	1 Std	2 Std	3 Std	4 Std	5 Std
GR. A	11	17	18	12	16	GR. A	11	17	18	14	11
GR. B	1	0	2	5	0	GR. B	1	0	3	3	3
GR. C	0	0	1	0	1	GR. C	0	0	1	1	1
GR. D	0	0	1	1	0	GR. D	0	0	0	0	1
GR. E	0	0	0	0	0	GR. E	0	0	0	0	1

DEAL POST TEST 2019-20 - SCHOOL REPORT CARD

PONDY
DIS Z3

34020200713 GPS KAKAYANTHOPE

All Grades represent the following scorings in % *

GRADE A - >75	* School Status Grade represents the total enrollment of the school (Not %)
GRADE B - 51 TO 75	
GRADE C - 26 TO 50	
GRADE D - 10 TO 25	
GRADE E - <10	

Note: The Values given in the brackets denote the difference between the Pre and Post Test Scores.
(For Example: If the Pre-Test Grade is 'C' and the Post-Test Grade is 'A', then the progress is +2)

SCHOOL GRADE - AB

Status Gr. A (0)	Performance Gr. B (0)
------------------	-----------------------

OVERALL PERFORMANCE GRADES

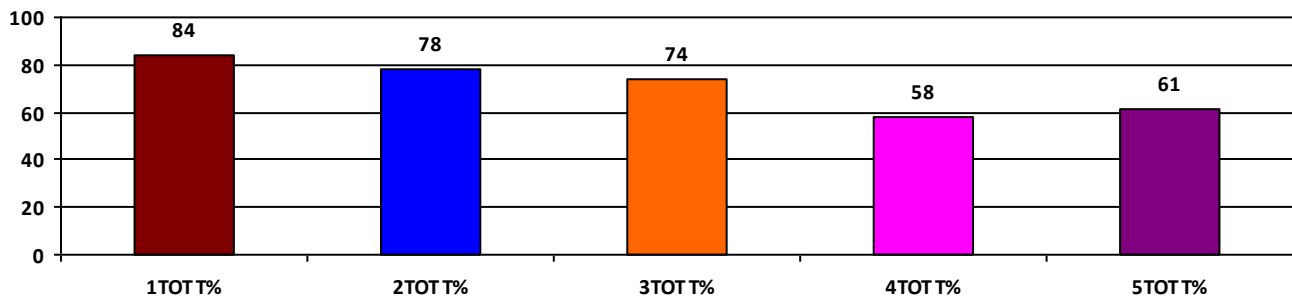
	Boys	Girls	Total
SCHOOL GR.	B	A	B
Diff. to Pre-Test	(+1)	(+1)	(0)
DIST. GR.	B	B	B
STATE GR.	B	B	B

CLASSWISE APPEARED

DETAILS	I STD	II STD	III STD	IV STD	V STD
BOYS	6	10	4	11	8
GIRLS	7	6	8	12	9
TOTAL	13	16	12	23	17
Diff. to Pre-Test	(+2)	(0)	(+1)	(+1)	(+1)

CLASSWISE PERFORMANCE GRADES (% of marks)

DETAILS	I STD	II STD	III STD	IV STD	V STD
%	84	78	74	58	61
SCHOOL GR.	A	A	B	B	B
Diff. to Pre-Test	(0)	(+2)	(0)	(+1)	(0)
DIST. GR.	A	B	B	B	B
STATE GR.	A	B	B	B	B



GRADEWISE PERFORMANCE (NO. OF STUDENTS)

ENGLISH	1 Std	2 Std	3 Std	4 Std	5 Std	TAMIL	1 Std	2 Std	3 Std	4 Std	5 Std
GR. A	9	12	8	5	6	GR. A	11	11	8	5	9
GR. B	4	3	1	11	5	GR. B	2	1	1	8	3
GR. C	0	1	0	5	3	GR. C	0	3	2	8	3
GR. D	0	0	3	1	3	GR. D	0	1	1	1	2
GR. E	0	0	0	1	0	GR. E	0	0	0	1	0

DEAL POST TEST 2019-20 - SCHOOL REPORT CARD

PONDY
DIS Z3

34020200714 GPS CHINNAVEERAMPATTINAM

All Grades represent the following scorings in % *

GRADE A - >75	* School Status Grade represents the total enrollment of the school (Not %)
GRADE B - 51 TO 75	
GRADE C - 26 TO 50	
GRADE D - 10 TO 25	
GRADE E - <10	

Note: The Values given in the brackets denote the difference between the Pre and Post Test Scores.
(For Example: If the Pre-Test Grade is 'C' and the Post-Test Grade is 'A', then the progress is +2)

SCHOOL GRADE - EA

Status Gr. E (0) Performance Gr. A(+1)

OVERALL PERFORMANCE GRADES

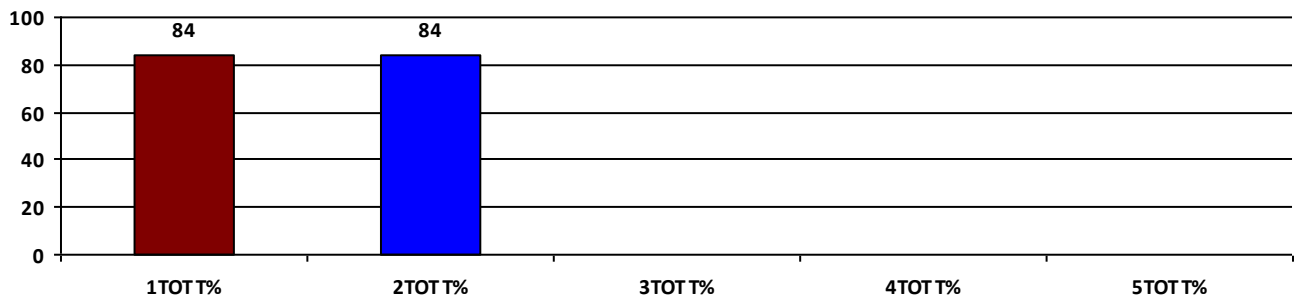
	Boys	Girls	Total
SCHOOL GR.	A	A	A
Diff. to Pre-Test	(+2)	(+1)	(+1)
DIST. GR.	B	B	B
STATE GR.	B	B	B

CLASSWISE APPEARED

DETAILS	I STD	II STD	III STD	IV STD	V STD
BOYS	1	1	0	0	0
GIRLS	2	0	0	0	0
TOTAL	3	1	0	0	0
Diff. to Pre-Test	(0)	(0)	(0)	(0)	(0)

CLASSWISE PERFORMANCE GRADES (% of marks)

DETAILS	I STD	II STD	III STD	IV STD	V STD
%	84	84	NA	NA	NA
SCHOOL GR.	A	A	NA	NA	NA
Diff. to Pre-Test	(+1)	(+1)	(+8)	(+8)	(+8)
DIST. GR.	A	B	B	B	B
STATE GR.	A	B	B	B	B



GRADEWISE PERFORMANCE (NO. OF STUDENTS)

ENGLISH	1 Std	2 Std	3 Std	4 Std	5 Std	TAMIL	1 Std	2 Std	3 Std	4 Std	5 Std
GR. A	2	1	0	0	0	GR. A	3	1	0	0	0
GR. B	1	0	0	0	0	GR. B	0	0	0	0	0
GR. C	0	0	0	0	0	GR. C	0	0	0	0	0
GR. D	0	0	0	0	0	GR. D	0	0	0	0	0
GR. E	0	0	0	0	0	GR. E	0	0	0	0	0

DEAL POST TEST 2019-20 - SCHOOL REPORT CARD

PONDY
DIS Z3

34020200715 GPS VEERAMPATTINAM

All Grades represent the following scorings in % *

GRADE A - >75	* School Status Grade represents the total enrollment of the school (Not %)
GRADE B - 51 TO 75	
GRADE C - 26 TO 50	
GRADE D - 10 TO 25	
GRADE E - <10	

Note: The Values given in the brackets denote the difference between the Pre and Post Test Scores.
(For Example: If the Pre-Test Grade is 'C' and the Post-Test Grade is 'A', then the progress is +2)

SCHOOL GRADE - BA

Status Gr. B (0) Performance Gr. A(+1)

OVERALL PERFORMANCE GRADES

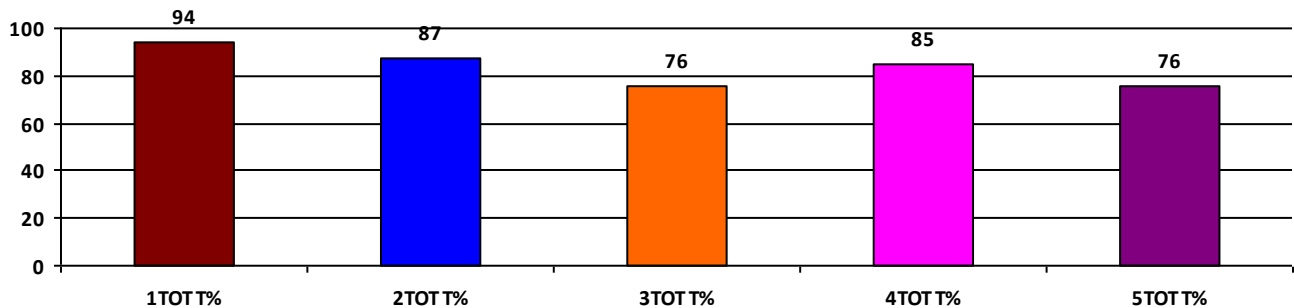
	Boys	Girls	Total
SCHOOL GR.	A	NA	A
Diff. to Pre-Test	(+1)	(+8)	(+1)
DIST. GR.	B	B	B
STATE GR.	B	B	B

CLASSWISE APPEARED

DETAILS	I STD	II STD	III STD	IV STD	V STD
BOYS	10	5	14	14	15
GIRLS	0	0	0	0	0
TOTAL	10	5	14	14	15
Diff. to Pre-Test	(0)	(0)	(0)	(0)	(0)

CLASSWISE PERFORMANCE GRADES (% of marks)

DETAILS	I STD	II STD	III STD	IV STD	V STD
%	94	87	76	85	76
SCHOOL GR.	A	A	A	A	A
Diff. to Pre-Test	(+1)	(+2)	(+2)	(+1)	(+2)
DIST. GR.	A	B	B	B	B
STATE GR.	A	B	B	B	B



GRADEWISE PERFORMANCE (NO. OF STUDENTS)

ENGLISH	1 Std	2 Std	3 Std	4 Std	5 Std	TAMIL	1 Std	2 Std	3 Std	4 Std	5 Std
GR. A	10	4	11	10	9	GR. A	10	5	9	12	10
GR. B	0	1	1	4	3	GR. B	0	0	2	2	3
GR. C	0	0	1	0	1	GR. C	0	0	2	0	0
GR. D	0	0	0	0	1	GR. D	0	0	0	0	1
GR. E	0	0	1	0	1	GR. E	0	0	1	0	1

DEAL POST TEST 2019-20 - SCHOOL REPORT CARD

PONDY
DIS Z3

34020200718 GPS ARIYANKUPPAM-PET

All Grades represent the following scorings in % *

GRADE A - >75	* School Status Grade represents the total enrollment of the school (Not %)
GRADE B - 51 TO 75	
GRADE C - 26 TO 50	
GRADE D - 10 TO 25	
GRADE E - <10	

Note: The Values given in the brackets denote the difference between the Pre and Post Test Scores.
(For Example: If the Pre-Test Grade is 'C' and the Post-Test Grade is 'A', then the progress is +2)

SCHOOL GRADE - DA

Status Gr. D (0) Performance Gr. A (0)

OVERALL PERFORMANCE GRADES

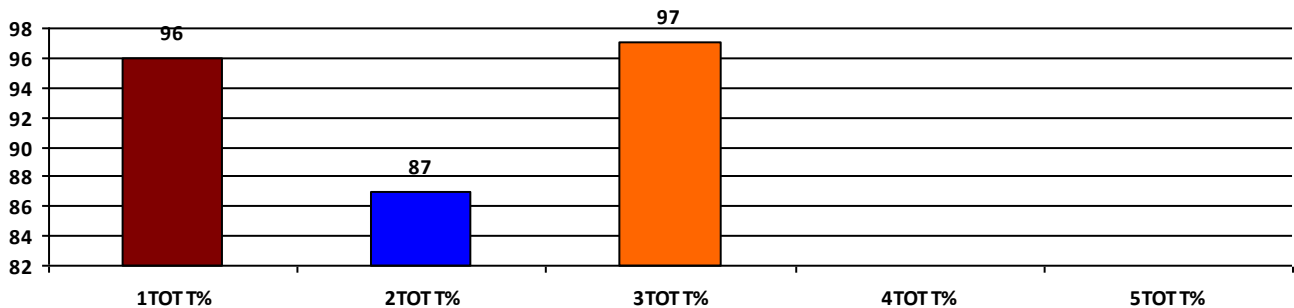
	Boys	Girls	Total
SCHOOL GR.	A	A	A
Diff. to Pre-Test	(0)	(0)	(0)
DIST. GR.	B	B	B
STATE GR.	B	B	B

CLASSWISE APPEARED

DETAILS	I STD	II STD	III STD	IV STD	V STD
BOYS	1	0	5	0	0
GIRLS	1	2	3	0	0
TOTAL	2	2	8	0	0
Diff. to Pre-Test	(0)	(0)	(0)	(0)	(0)

CLASSWISE PERFORMANCE GRADES (% of marks)

DETAILS	I STD	II STD	III STD	IV STD	V STD
%	96	87	97	NA	NA
SCHOOL GR.	A	A	A	NA	NA
Diff. to Pre-Test	(0)	(0)	(0)	(+8)	(+8)
DIST. GR.	A	B	B	B	B
STATE GR.	A	B	B	B	B



GRADEWISE PERFORMANCE (NO. OF STUDENTS)

ENGLISH	1 Std	2 Std	3 Std	4 Std	5 Std	TAMIL	1 Std	2 Std	3 Std	4 Std	5 Std
GR. A	2	1	8	0	0	GR. A	2	2	8	0	0
GR. B	0	1	0	0	0	GR. B	0	0	0	0	0
GR. C	0	0	0	0	0	GR. C	0	0	0	0	0
GR. D	0	0	0	0	0	GR. D	0	0	0	0	0
GR. E	0	0	0	0	0	GR. E	0	0	0	0	0

DEAL POST TEST 2019-20 - SCHOOL REPORT CARD

PONDY
DIS Z3

34020200719 **GPS ARUNTHATHIPURAM**

All Grades represent the following scorings in % *

GRADE A - >75	* School Status Grade represents the total enrollment of the school (Not %)
GRADE B - 51 TO 75	
GRADE C - 26 TO 50	
GRADE D - 10 TO 25	
GRADE E - <10	

Note: The Values given in the brackets denote the difference between the Pre and Post Test Scores.
(For Example: If the Pre-Test Grade is 'C' and the Post-Test Grade is 'A', then the progress is +2)

SCHOOL GRADE - DA

Status Gr. D (0) Performance Gr. A(+1)

OVERALL PERFORMANCE GRADES

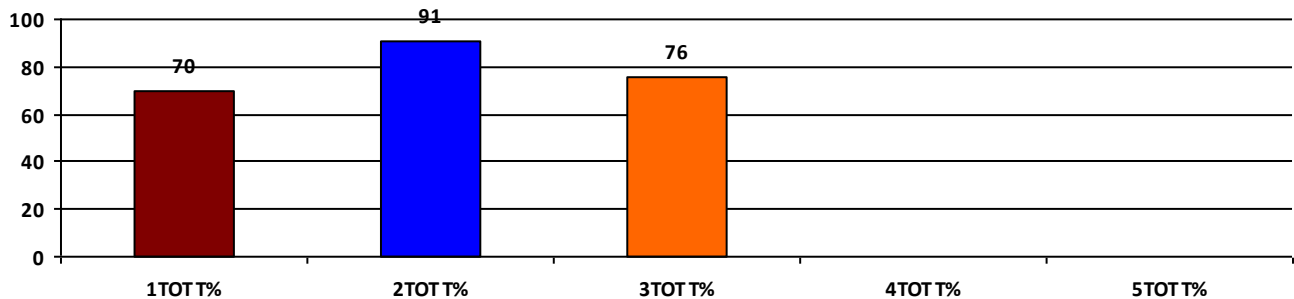
	Boys	Girls	Total
SCHOOL GR.	A	B	A
Diff. to Pre-Test	(+1)	(0)	(+1)
DIST. GR.	B	B	B
STATE GR.	B	B	B

CLASSWISE APPEARED

DETAILS	I STD	II STD	III STD	IV STD	V STD
BOYS	3	1	2	0	0
GIRLS	2	3	1	0	0
TOTAL	5	4	3	0	0
Diff. to Pre-Test	(-1)	(-1)	(0)	(0)	(0)

CLASSWISE PERFORMANCE GRADES (% of marks)

DETAILS	I STD	II STD	III STD	IV STD	V STD
%	70	91	76	NA	NA
SCHOOL GR.	B	A	A	NA	NA
Diff. to Pre-Test	(0)	(0)	(+1)	(+8)	(+8)
DIST. GR.	A	B	B	B	B
STATE GR.	A	B	B	B	B



GRADEWISE PERFORMANCE (NO. OF STUDENTS)

ENGLISH	1 Std	2 Std	3 Std	4 Std	5 Std	TAMIL	1 Std	2 Std	3 Std	4 Std	5 Std
GR. A	2	4	0	0	0	GR. A	2	4	2	0	0
GR. B	2	0	3	0	0	GR. B	2	0	1	0	0
GR. C	1	0	0	0	0	GR. C	1	0	0	0	0
GR. D	0	0	0	0	0	GR. D	0	0	0	0	0
GR. E	0	0	0	0	0	GR. E	0	0	0	0	0

DEAL POST TEST 2019-20 - SCHOOL REPORT CARD

PONDY
DIS Z3

34020201001 GGPS, BAHOUR

All Grades represent the following scorings in % *

GRADE A - >75	
GRADE B - 51 TO 75	* School Status Grade
GRADE C - 26 TO 50	represents the total
GRADE D - 10 TO 25	enrollment of the
GRADE E - <10	school (Not %)

Note: The Values given in the brackets denote the difference between the Pre and Post Test Scores.
(For Example: If the Pre-Test Grade is 'C' and the Post-Test Grade is 'A', then the progress is +2)

SCHOOL GRADE - AB

Status Gr. A (0)	Performance Gr. B (0)
------------------	-----------------------

OVERALL PERFORMANCE GRADES

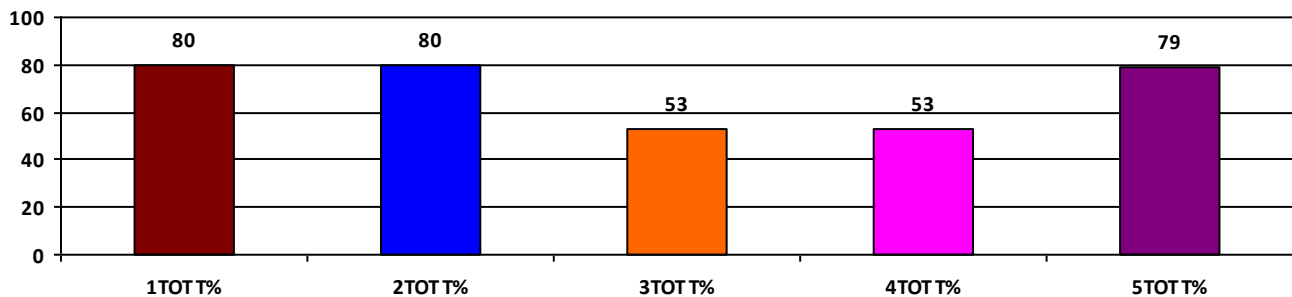
	Boys	Girls	Total
SCHOOL GR.	NA	B	B
Diff. to Pre-Test	(+8)	(0)	(0)
DIST. GR.	B	B	B
STATE GR.	B	B	B

CLASSWISE APPEARED

DETAILS	I STD	II STD	III STD	IV STD	V STD
BOYS	0	0	0	0	0
GIRLS	12	18	21	31	21
TOTAL	12	18	21	31	21
Diff. to Pre-Test	(0)	(-2)	(0)	(0)	(0)

CLASSWISE PERFORMANCE GRADES (% of marks)

DETAILS	I STD	II STD	III STD	IV STD	V STD
%	80	80	53	53	79
SCHOOL GR.	A	A	B	B	A
Diff. to Pre-Test	(0)	(+2)	(0)	(0)	(+1)
DIST. GR.	A	B	B	B	B
STATE GR.	A	B	B	B	B



GRADEWISE PERFORMANCE (NO. OF STUDENTS)

ENGLISH	1 Std	2 Std	3 Std	4 Std	5 Std	TAMIL	1 Std	2 Std	3 Std	4 Std	5 Std
GR. A	10	13	2	6	14	GR. A	7	10	4	6	13
GR. B	2	5	5	12	6	GR. B	5	6	8	13	8
GR. C	0	0	12	6	1	GR. C	0	2	8	8	0
GR. D	0	0	2	4	0	GR. D	0	0	1	3	0
GR. E	0	0	0	3	0	GR. E	0	0	0	1	0

DEAL POST TEST 2019-20 - SCHOOL REPORT CARD

PONDY
DIS Z3

34020201007 GPS BAHOUR PET

All Grades represent the following scorings in % *

GRADE A - >75	
GRADE B - 51 TO 75	* School Status Grade
GRADE C - 26 TO 50	represents the total
GRADE D - 10 TO 25	enrollment of the
GRADE E - <10	school (Not %)

Note: The Values given in the brackets denote the difference between the Pre and Post Test Scores.
(For Example: If the Pre-Test Grade is 'C' and the Post-Test Grade is 'A', then the progress is +2)

SCHOOL GRADE - AA

Status Gr. A (0) Performance Gr. A(+2)

OVERALL PERFORMANCE GRADES

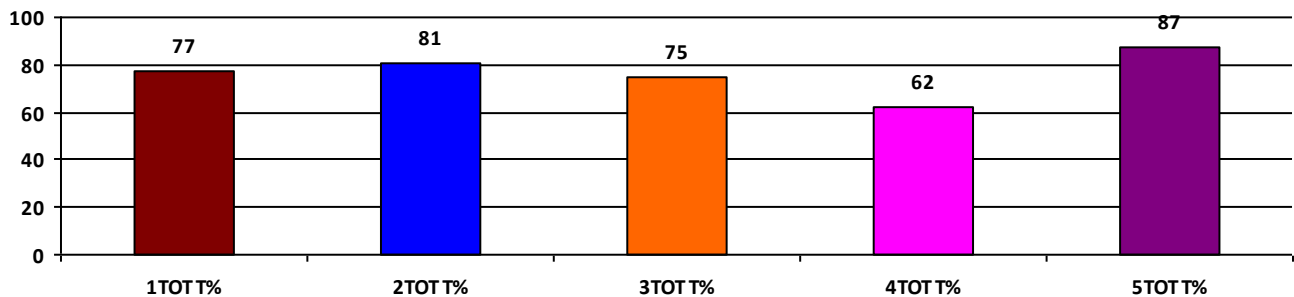
	Boys	Girls	Total
SCHOOL GR.	B	A	A
Diff. to Pre-Test	(+1)	(+1)	(+2)
DIST. GR.	B	B	B
STATE GR.	B	B	B

CLASSWISE APPEARED

DETAILS	I STD	II STD	III STD	IV STD	V STD
BOYS	9	15	6	13	14
GIRLS	12	18	12	10	10
TOTAL	21	33	18	23	24
Diff. to Pre-Test	(+1)	(+1)	(0)	(+1)	(0)

CLASSWISE PERFORMANCE GRADES (% of marks)

DETAILS	I STD	II STD	III STD	IV STD	V STD
%	77	81	75	62	87
SCHOOL GR.	A	A	B	B	A
Diff. to Pre-Test	(+1)	(+2)	(+1)	(+1)	(+1)
DIST. GR.	A	B	B	B	B
STATE GR.	A	B	B	B	B



GRADEWISE PERFORMANCE (NO. OF STUDENTS)

ENGLISH	1 Std	2 Std	3 Std	4 Std	5 Std	TAMIL	1 Std	2 Std	3 Std	4 Std	5 Std
GR. A	13	19	10	8	19	GR. A	16	22	12	12	19
GR. B	6	12	7	6	4	GR. B	2	5	5	7	3
GR. C	1	1	0	6	1	GR. C	3	6	0	2	2
GR. D	1	1	1	2	0	GR. D	0	0	1	1	0
GR. E	0	0	0	1	0	GR. E	0	0	0	1	0

DEAL POST TEST 2019-20 - SCHOOL REPORT CARD

PONDY
DIS Z3

34020201501 **GPS IRULANSANDAI**

All Grades represent the following scorings in % *

GRADE A - >75	
GRADE B - 51 TO 75	* School Status Grade
GRADE C - 26 TO 50	represents the total
GRADE D - 10 TO 25	enrollment of the
GRADE E - <10	school (Not %)

Note: The Values given in the brackets denote the difference between the Pre and Post Test Scores.
(For Example: If the Pre-Test Grade is 'C' and the Post-Test Grade is 'A', then the progress is +2)

SCHOOL GRADE - AB

Status Gr. A (0) Performance Gr. B(+1)

OVERALL PERFORMANCE GRADES

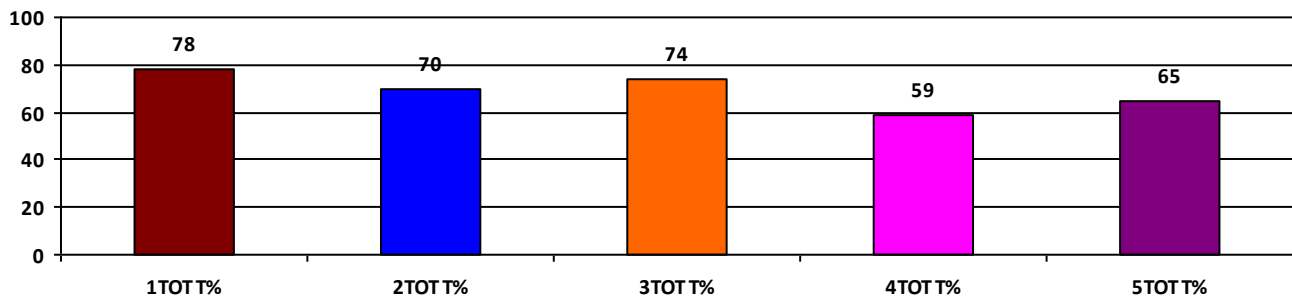
	Boys	Girls	Total
SCHOOL GR.	B	B	B
Diff. to Pre-Test	(+1)	(0)	(+1)
DIST. GR.	B	B	B
STATE GR.	B	B	B

CLASSWISE APPEARED

DETAILS	I STD	II STD	III STD	IV STD	V STD
BOYS	8	13	11	12	7
GIRLS	7	10	4	5	6
TOTAL	15	23	15	17	13
Diff. to Pre-Test	(-3)	(+1)	(-1)	(0)	(-2)

CLASSWISE PERFORMANCE GRADES (% of marks)

DETAILS	I STD	II STD	III STD	IV STD	V STD
%	78	70	74	59	65
SCHOOL GR.	A	B	B	B	B
Diff. to Pre-Test	(+1)	(+1)	(0)	(+1)	(+1)
DIST. GR.	A	B	B	B	B
STATE GR.	A	B	B	B	B



GRADEWISE PERFORMANCE (NO. OF STUDENTS)

ENGLISH	1 Std	2 Std	3 Std	4 Std	5 Std	TAMIL	1 Std	2 Std	3 Std	4 Std	5 Std
GR. A	9	8	5	0	4	GR. A	9	16	10	10	5
GR. B	5	8	7	8	6	GR. B	5	3	3	4	5
GR. C	1	6	3	6	2	GR. C	1	3	2	1	3
GR. D	0	1	0	2	1	GR. D	0	1	0	1	0
GR. E	0	0	0	1	0	GR. E	0	0	0	1	0

DEAL POST TEST 2019-20 - SCHOOL REPORT CARD

PONDY
DIS Z3

34020202504 GPS KIRUMAMPAKKAM

All Grades represent the following scorings in % *

GRADE A - >75	
GRADE B - 51 TO 75	* School Status Grade
GRADE C - 26 TO 50	represents the total
GRADE D - 10 TO 25	enrollment of the
GRADE E - <10	school (Not %)

Note: The Values given in the brackets denote the difference between the Pre and Post Test Scores.
(For Example: If the Pre-Test Grade is 'C' and the Post-Test Grade is 'A', then the progress is +2)

SCHOOL GRADE - AB

Status Gr. A (0) Performance Gr. B(+1)

OVERALL PERFORMANCE GRADES

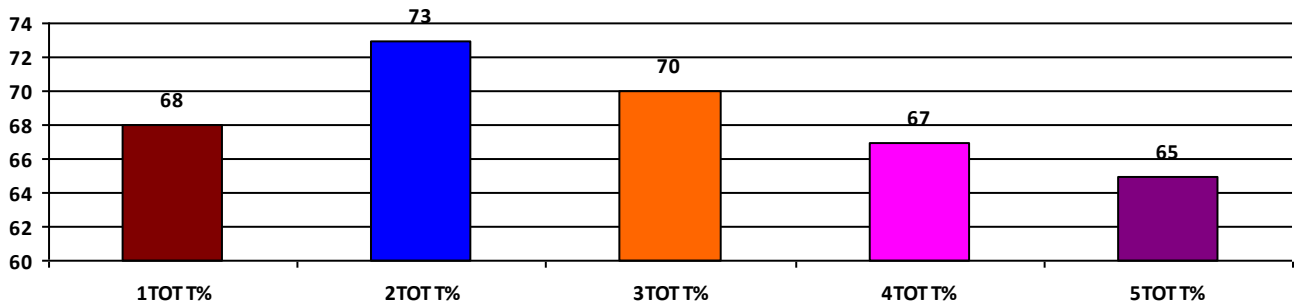
	Boys	Girls	Total
SCHOOL GR.	B	B	B
Diff. to Pre-Test	(+1)	(0)	(+1)
DIST. GR.	B	B	B
STATE GR.	B	B	B

CLASSWISE APPEARED

DETAILS	I STD	II STD	III STD	IV STD	V STD
BOYS	14	19	17	29	24
GIRLS	21	21	17	22	36
TOTAL	35	40	34	51	60
Diff. to Pre-Test	(+1)	(+2)	(-1)	(-1)	(+4)

CLASSWISE PERFORMANCE GRADES (% of marks)

DETAILS	I STD	II STD	III STD	IV STD	V STD
%	68	73	70	67	65
SCHOOL GR.	B	B	B	B	B
Diff. to Pre-Test	(0)	(+1)	(+1)	(+1)	(0)
DIST. GR.	A	B	B	B	B
STATE GR.	A	B	B	B	B



GRADEWISE PERFORMANCE (NO. OF STUDENTS)

ENGLISH	1 Std	2 Std	3 Std	4 Std	5 Std	TAMIL	1 Std	2 Std	3 Std	4 Std	5 Std
GR. A	13	19	16	15	29	GR. A	22	24	15	22	27
GR. B	14	11	12	30	17	GR. B	8	12	12	15	15
GR. C	4	8	4	3	11	GR. C	2	2	4	11	5
GR. D	2	2	2	2	2	GR. D	1	2	3	3	11
GR. E	2	0	0	1	1	GR. E	2	0	0	0	2

DEAL POST TEST 2019-20 - SCHOOL REPORT CARD

PONDY
DIS Z3

34020203502 **GPS KANNIAKOIL**

All Grades represent the following scorings in % *

GRADE A - >75	* School Status Grade represents the total enrollment of the school (Not %)
GRADE B - 51 TO 75	
GRADE C - 26 TO 50	
GRADE D - 10 TO 25	
GRADE E - <10	

Note: The Values given in the brackets denote the difference between the Pre and Post Test Scores.
(For Example: If the Pre-Test Grade is 'C' and the Post-Test Grade is 'A', then the progress is +2)

SCHOOL GRADE - BA

Status Gr. B (0) Performance Gr. A(+1)

OVERALL PERFORMANCE GRADES

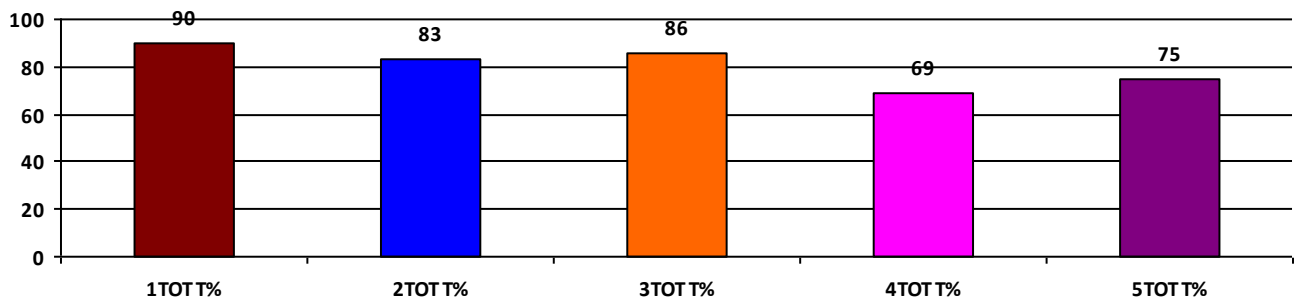
	Boys	Girls	Total
SCHOOL GR.	B	A	A
Diff. to Pre-Test	(0)	(+1)	(+1)
DIST. GR.	B	B	B
STATE GR.	B	B	B

CLASSWISE APPEARED

DETAILS	I STD	II STD	III STD	IV STD	V STD
BOYS	5	4	9	5	6
GIRLS	7	4	6	14	3
TOTAL	12	8	15	19	9
Diff. to Pre-Test	(-1)	(0)	(0)	(0)	(0)

CLASSWISE PERFORMANCE GRADES (% of marks)

DETAILS	I STD	II STD	III STD	IV STD	V STD
%	90	83	86	69	75
SCHOOL GR.	A	A	A	B	B
Diff. to Pre-Test	(+1)	(+1)	(+1)	(+1)	(0)
DIST. GR.	A	B	B	B	B
STATE GR.	A	B	B	B	B



GRADEWISE PERFORMANCE (NO. OF STUDENTS)

ENGLISH	1 Std	2 Std	3 Std	4 Std	5 Std	TAMIL	1 Std	2 Std	3 Std	4 Std	5 Std
GR. A	10	7	11	8	6	GR. A	10	7	12	11	6
GR. B	0	0	4	8	1	GR. B	1	0	2	5	1
GR. C	2	0	0	1	1	GR. C	1	1	1	2	1
GR. D	0	0	0	1	0	GR. D	0	0	0	0	0
GR. E	0	1	0	1	1	GR. E	0	0	0	1	1

DEAL POST TEST 2019-20 - SCHOOL REPORT CARD

PONDY
DIS Z3

34020203503 **GPS MOORTHIKUPPAM**

All Grades represent the following scorings in % *

GRADE A - >75	* School Status Grade represents the total enrollment of the school (Not %)
GRADE B - 51 TO 75	
GRADE C - 26 TO 50	
GRADE D - 10 TO 25	
GRADE E - <10	

Note: The Values given in the brackets denote the difference between the Pre and Post Test Scores.
(For Example: If the Pre-Test Grade is 'C' and the Post-Test Grade is 'A', then the progress is +2)

SCHOOL GRADE - CB

Status Gr. C (0) Performance Gr. B (0)

OVERALL PERFORMANCE GRADES

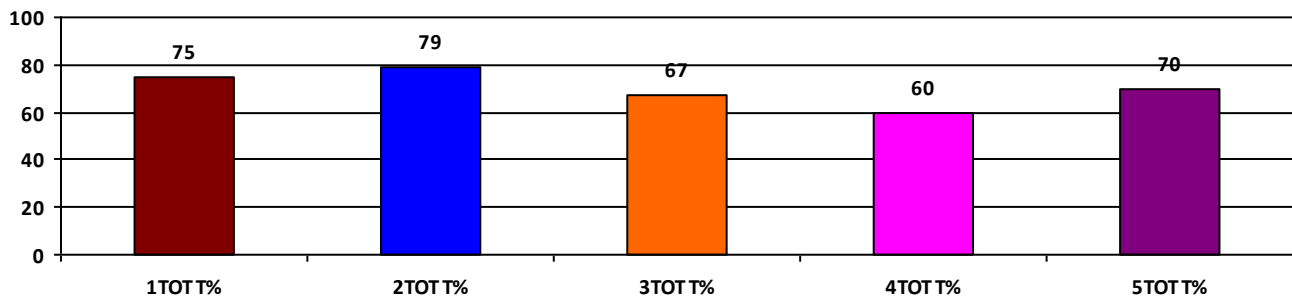
	Boys	Girls	Total
SCHOOL GR.	B	B	B
Diff. to Pre-Test	(0)	(0)	(0)
DIST. GR.	B	B	B
STATE GR.	B	B	B

CLASSWISE APPEARED

DETAILS	I STD	II STD	III STD	IV STD	V STD
BOYS	5	2	4	4	2
GIRLS	5	4	5	4	5
TOTAL	10	6	9	8	7
Diff. to Pre-Test	(0)	(0)	(0)	(0)	(0)

CLASSWISE PERFORMANCE GRADES (% of marks)

DETAILS	I STD	II STD	III STD	IV STD	V STD
%	75	79	67	60	70
SCHOOL GR.	B	A	B	B	B
Diff. to Pre-Test	(0)	(+1)	(0)	(0)	(0)
DIST. GR.	A	B	B	B	B
STATE GR.	A	B	B	B	B



GRADEWISE PERFORMANCE (NO. OF STUDENTS)

ENGLISH	1 Std	2 Std	3 Std	4 Std	5 Std	TAMIL	1 Std	2 Std	3 Std	4 Std	5 Std
GR. A	7	4	4	0	2	GR. A	3	4	2	3	4
GR. B	3	1	5	5	4	GR. B	6	1	3	4	3
GR. C	0	0	0	3	1	GR. C	1	1	4	1	0
GR. D	0	1	0	0	0	GR. D	0	0	0	0	0
GR. E	0	0	0	0	0	GR. E	0	0	0	0	0

DEAL POST TEST 2019-20 - SCHOOL REPORT CARD

PONDY
DIS Z3

34020203504 GPS NARAMBAI

All Grades represent the following scorings in % *

GRADE A - >75	
GRADE B - 51 TO 75	* School Status Grade
GRADE C - 26 TO 50	represents the total
GRADE D - 10 TO 25	enrollment of the
GRADE E - <10	school (Not %)

Note: The Values given in the brackets denote the difference between the Pre and Post Test Scores.
(For Example: If the Pre-Test Grade is 'C' and the Post-Test Grade is 'A', then the progress is +2)

SCHOOL GRADE - CA

Status Gr. C (0) Performance Gr. A(+2)

OVERALL PERFORMANCE GRADES

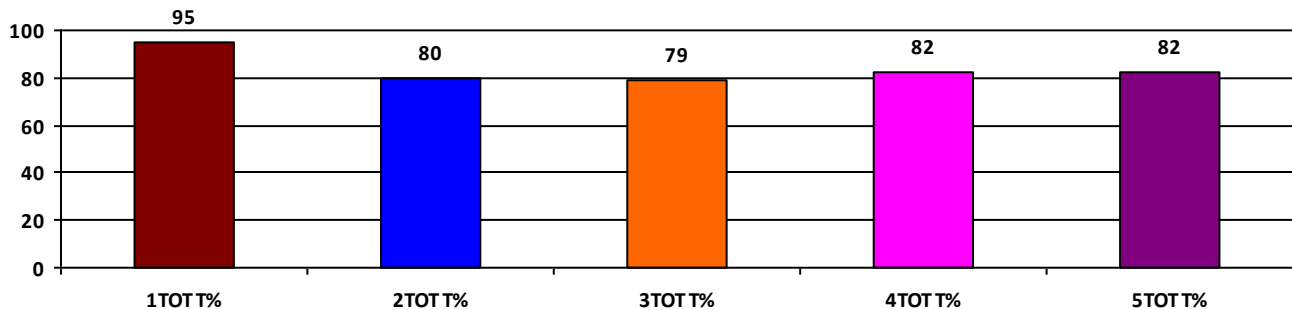
	Boys	Girls	Total
SCHOOL GR.	A	A	A
Diff. to Pre-Test	(+2)	(+1)	(+2)
DIST. GR.	B	B	B
STATE GR.	B	B	B

CLASSWISE APPEARED

DETAILS	I STD	II STD	III STD	IV STD	V STD
BOYS	2	2	4	6	7
GIRLS	8	3	4	3	7
TOTAL	10	5	8	9	14
Diff. to Pre-Test	(0)	(0)	(0)	(0)	(-1)

CLASSWISE PERFORMANCE GRADES (% of marks)

DETAILS	I STD	II STD	III STD	IV STD	V STD
%	95	80	79	82	82
SCHOOL GR.	A	A	A	A	A
Diff. to Pre-Test	(+1)	(+2)	(+2)	(+2)	(+2)
DIST. GR.	A	B	B	B	B
STATE GR.	A	B	B	B	B



GRADEWISE PERFORMANCE (NO. OF STUDENTS)

ENGLISH	1 Std	2 Std	3 Std	4 Std	5 Std	TAMIL	1 Std	2 Std	3 Std	4 Std	5 Std
GR. A	10	3	4	6	10	GR. A	10	3	7	7	8
GR. B	0	2	4	2	4	GR. B	0	2	1	2	6
GR. C	0	0	0	1	0	GR. C	0	0	0	0	0
GR. D	0	0	0	0	0	GR. D	0	0	0	0	0
GR. E	0	0	0	0	0	GR. E	0	0	0	0	0

DEAL POST TEST 2019-20 - SCHOOL REPORT CARD

PONDY
DIS Z3

34020203701 **GPS MANAVELY (A)**

All Grades represent the following scorings in % *

GRADE A - >75	* School Status Grade represents the total enrollment of the school (Not %)
GRADE B - 51 TO 75	
GRADE C - 26 TO 50	
GRADE D - 10 TO 25	
GRADE E - <10	

Note: The Values given in the brackets denote the difference between the Pre and Post Test Scores.
(For Example: If the Pre-Test Grade is 'C' and the Post-Test Grade is 'A', then the progress is +2)

SCHOOL GRADE - AA

Status Gr. A (0)	Performance Gr. A(+1)
------------------	-----------------------

OVERALL PERFORMANCE GRADES

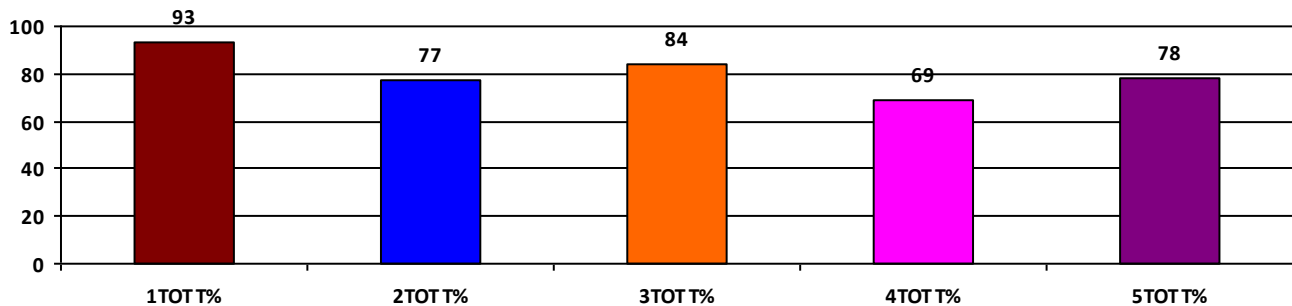
	Boys	Girls	Total
SCHOOL GR.	A	A	A
Diff. to Pre-Test	(+1)	(+1)	(+1)
DIST. GR.	B	B	B
STATE GR.	B	B	B

CLASSWISE APPEARED

DETAILS	I STD	II STD	III STD	IV STD	V STD
BOYS	5	15	22	30	36
GIRLS	20	12	20	20	24
TOTAL	25	27	42	50	60
Diff. to Pre-Test	(-2)	(-2)	(-1)	(+3)	(+5)

CLASSWISE PERFORMANCE GRADES (% of marks)

DETAILS	I STD	II STD	III STD	IV STD	V STD
%	93	77	84	69	78
SCHOOL GR.	A	A	A	B	A
Diff. to Pre-Test	(+1)	(+2)	(+1)	(0)	(+1)
DIST. GR.	A	B	B	B	B
STATE GR.	A	B	B	B	B



GRADEWISE PERFORMANCE (NO. OF STUDENTS)

ENGLISH	1 Std	2 Std	3 Std	4 Std	5 Std	TAMIL	1 Std	2 Std	3 Std	4 Std	5 Std
GR. A	24	17	35	32	38	GR. A	23	19	36	31	41
GR. B	1	4	2	4	12	GR. B	2	3	3	5	10
GR. C	0	2	2	6	5	GR. C	0	2	0	2	3
GR. D	0	2	0	3	3	GR. D	0	2	0	6	2
GR. E	0	2	3	5	2	GR. E	0	1	3	6	4

DEAL POST TEST 2019-20 - SCHOOL REPORT CARD

PONDY
DIS Z3

34020203702 **GHSS, NONANKUPPAM**

All Grades represent the following scorings in % *

GRADE A - >75	* School Status Grade represents the total enrollment of the school (Not %)
GRADE B - 51 TO 75	
GRADE C - 26 TO 50	
GRADE D - 10 TO 25	
GRADE E - <10	

Note: The Values given in the brackets denote the difference between the Pre and Post Test Scores.
(For Example: If the Pre-Test Grade is 'C' and the Post-Test Grade is 'A', then the progress is +2)

SCHOOL GRADE - BA

Status Gr. B (0) Performance Gr. A(+1)

OVERALL PERFORMANCE GRADES

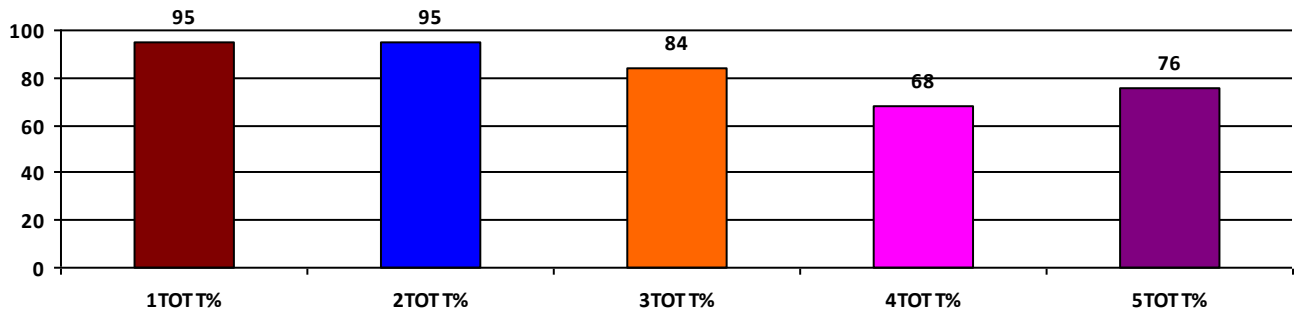
	Boys	Girls	Total
SCHOOL GR.	A	A	A
Diff. to Pre-Test	(+2)	(+1)	(+1)
DIST. GR.	B	B	B
STATE GR.	B	B	B

CLASSWISE APPEARED

DETAILS	I STD	II STD	III STD	IV STD	V STD
BOYS	5	4	8	9	8
GIRLS	8	7	3	11	11
TOTAL	13	11	11	20	19
Diff. to Pre-Test	(+1)	(0)	(0)	(+1)	(+1)

CLASSWISE PERFORMANCE GRADES (% of marks)

DETAILS	I STD	II STD	III STD	IV STD	V STD
%	95	95	84	68	76
SCHOOL GR.	A	A	A	B	A
Diff. to Pre-Test	(+1)	(+1)	(+2)	(+1)	(+1)
DIST. GR.	A	B	B	B	B
STATE GR.	A	B	B	B	B



GRADEWISE PERFORMANCE (NO. OF STUDENTS)

ENGLISH	1 Std	2 Std	3 Std	4 Std	5 Std	TAMIL	1 Std	2 Std	3 Std	4 Std	5 Std
GR. A	12	11	9	10	13	GR. A	13	11	9	9	15
GR. B	1	0	2	6	3	GR. B	0	0	2	7	0
GR. C	0	0	0	3	1	GR. C	0	0	0	2	2
GR. D	0	0	0	1	1	GR. D	0	0	0	2	1
GR. E	0	0	0	0	1	GR. E	0	0	0	0	1

DEAL POST TEST 2019-20 - SCHOOL REPORT CARD

PONDY
DIS Z3

34020203703 **GPS ODAIVELI**

All Grades represent the following scorings in % *

GRADE A - >75	* School Status Grade represents the total enrollment of the school (Not %)
GRADE B - 51 TO 75	
GRADE C - 26 TO 50	
GRADE D - 10 TO 25	
GRADE E - <10	

Note: The Values given in the brackets denote the difference between the Pre and Post Test Scores.
(For Example: If the Pre-Test Grade is 'C' and the Post-Test Grade is 'A', then the progress is +2)

SCHOOL GRADE - DA

Status Gr. D (0) Performance Gr. A(+1)

OVERALL PERFORMANCE GRADES

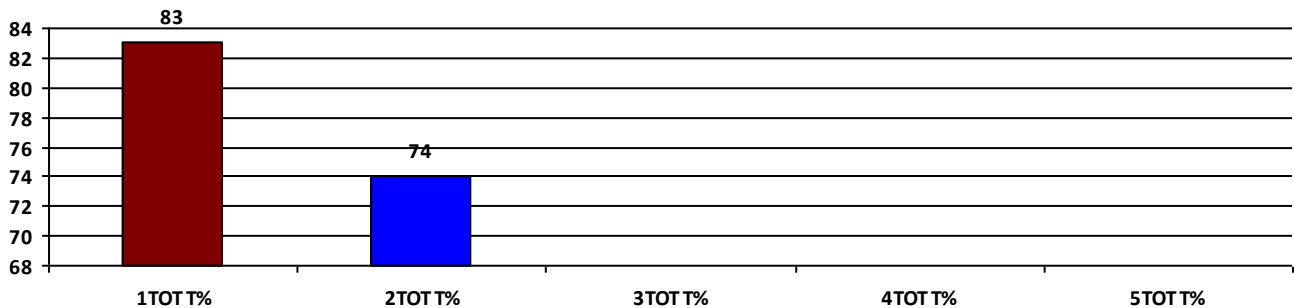
	Boys	Girls	Total
SCHOOL GR.	A	B	A
Diff. to Pre-Test	(+1)	(0)	(+1)
DIST. GR.	B	B	B
STATE GR.	B	B	B

CLASSWISE APPEARED

DETAILS	I STD	II STD	III STD	IV STD	V STD
BOYS	5	5	0	0	0
GIRLS	2	4	0	0	0
TOTAL	7	9	0	0	0
Diff. to Pre-Test	(+1)	(+1)	(0)	(0)	(0)

CLASSWISE PERFORMANCE GRADES (% of marks)

DETAILS	I STD	II STD	III STD	IV STD	V STD
%	83	74	NA	NA	NA
SCHOOL GR.	A	B	NA	NA	NA
Diff. to Pre-Test	(+1)	(0)	(+8)	(+8)	(+8)
DIST. GR.	A	B	B	B	B
STATE GR.	A	B	B	B	B



GRADEWISE PERFORMANCE (NO. OF STUDENTS)

ENGLISH	1 Std	2 Std	3 Std	4 Std	5 Std	TAMIL	1 Std	2 Std	3 Std	4 Std	5 Std
GR. A	5	5	0	0	0	GR. A	6	6	0	0	0
GR. B	2	3	0	0	0	GR. B	1	2	0	0	0
GR. C	0	0	0	0	0	GR. C	0	0	0	0	0
GR. D	0	1	0	0	0	GR. D	0	1	0	0	0
GR. E	0	0	0	0	0	GR. E	0	0	0	0	0

DEAL POST TEST 2019-20 - SCHOOL REPORT CARD

PONDY
DIS Z3

34020205301 **GPS PILLAIYARKUPPAM**

All Grades represent the following scorings in % *

GRADE A - >75	* School Status Grade represents the total enrollment of the school (Not %)
GRADE B - 51 TO 75	
GRADE C - 26 TO 50	
GRADE D - 10 TO 25	
GRADE E - <10	

Note: The Values given in the brackets denote the difference between the Pre and Post Test Scores.
(For Example: If the Pre-Test Grade is 'C' and the Post-Test Grade is 'A', then the progress is +2)

SCHOOL GRADE - BB

Status Gr. B (0) Performance Gr. B (0)

OVERALL PERFORMANCE GRADES

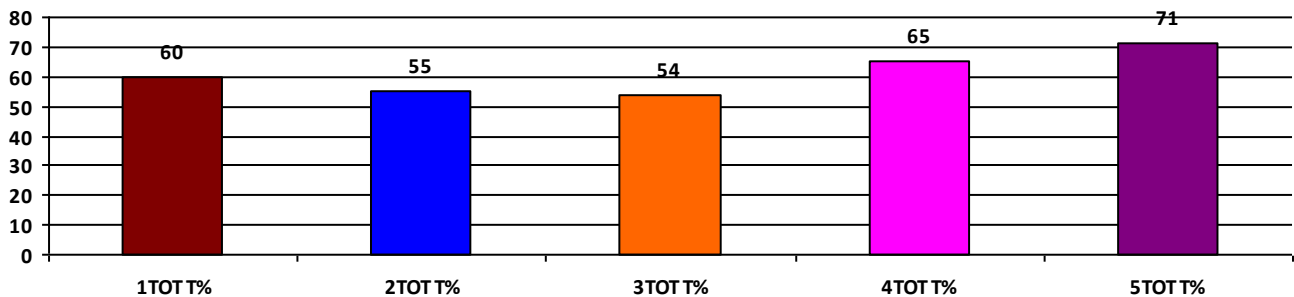
	Boys	Girls	Total
SCHOOL GR.	B	B	B
Diff. to Pre-Test	(+1)	(0)	(0)
DIST. GR.	B	B	B
STATE GR.	B	B	B

CLASSWISE APPEARED

DETAILS	I STD	II STD	III STD	IV STD	V STD
BOYS	7	6	4	4	11
GIRLS	4	8	4	5	9
TOTAL	11	14	8	9	20
Diff. to Pre-Test	(0)	(0)	(-1)	(0)	(0)

CLASSWISE PERFORMANCE GRADES (% of marks)

DETAILS	I STD	II STD	III STD	IV STD	V STD
%	60	55	54	65	71
SCHOOL GR.	B	B	B	B	B
Diff. to Pre-Test	(0)	(0)	(+1)	(+1)	(0)
DIST. GR.	A	B	B	B	B
STATE GR.	A	B	B	B	B



GRADEWISE PERFORMANCE (NO. OF STUDENTS)

ENGLISH	1 Std	2 Std	3 Std	4 Std	5 Std	TAMIL	1 Std	2 Std	3 Std	4 Std	5 Std
GR. A	0	4	0	1	10	GR. A	4	5	2	6	12
GR. B	6	4	3	6	7	GR. B	5	2	4	2	4
GR. C	3	3	4	1	2	GR. C	2	4	2	0	2
GR. D	2	1	1	1	1	GR. D	0	2	0	1	1
GR. E	0	2	0	0	0	GR. E	0	1	0	0	1

DEAL POST TEST 2019-20 - SCHOOL REPORT CARD

PONDY
DIS Z3

34020205302 **GPS KATTUKUPPAM**

All Grades represent the following scorings in % *

GRADE A - >75	* School Status Grade represents the total enrollment of the school (Not %)
GRADE B - 51 TO 75	
GRADE C - 26 TO 50	
GRADE D - 10 TO 25	
GRADE E - <10	

Note: The Values given in the brackets denote the difference between the Pre and Post Test Scores.
(For Example: If the Pre-Test Grade is 'C' and the Post-Test Grade is 'A', then the progress is +2)

SCHOOL GRADE - AA

Status Gr. A (0)	Performance Gr. A(+1)
------------------	-----------------------

OVERALL PERFORMANCE GRADES

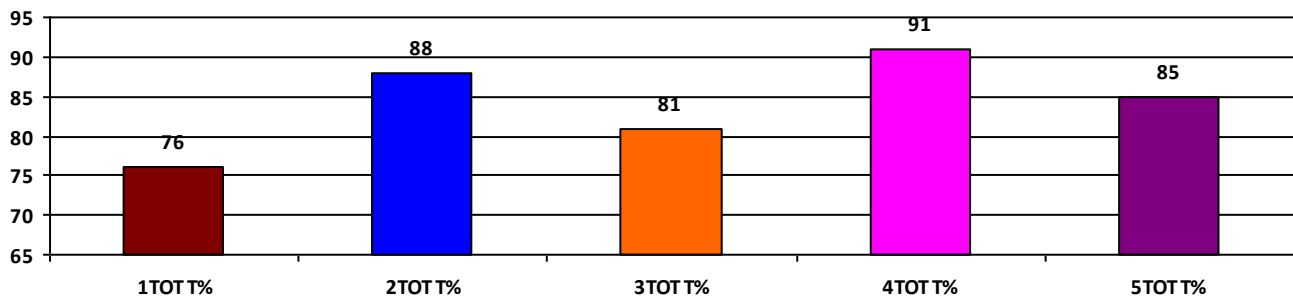
	Boys	Girls	Total
SCHOOL GR.	A	A	A
Diff. to Pre-Test	(+1)	(+1)	(+1)
DIST. GR.	B	B	B
STATE GR.	B	B	B

CLASSWISE APPEARED

DETAILS	I STD	II STD	III STD	IV STD	V STD
BOYS	6	6	4	7	8
GIRLS	9	17	11	8	8
TOTAL	15	23	15	15	16
Diff. to Pre-Test	(+2)	(-1)	(0)	(0)	(+1)

CLASSWISE PERFORMANCE GRADES (% of marks)

DETAILS	I STD	II STD	III STD	IV STD	V STD
%	76	88	81	91	85
SCHOOL GR.	A	A	A	A	A
Diff. to Pre-Test	(+1)	(+1)	(+1)	(0)	(+1)
DIST. GR.	A	B	B	B	B
STATE GR.	A	B	B	B	B



GRADEWISE PERFORMANCE (NO. OF STUDENTS)

ENGLISH	1 Std	2 Std	3 Std	4 Std	5 Std	TAMIL	1 Std	2 Std	3 Std	4 Std	5 Std
GR. A	10	21	8	14	13	GR. A	9	19	13	15	14
GR. B	2	2	5	1	1	GR. B	5	1	1	0	0
GR. C	3	0	2	0	2	GR. C	1	3	1	0	1
GR. D	0	0	0	0	0	GR. D	0	0	0	0	1
GR. E	0	0	0	0	0	GR. E	0	0	0	0	0

DEAL POST TEST 2019-20 - SCHOOL REPORT CARD

PONDY
DIS Z3

34020205303 GPS PUDUKUPPAM(B)

All Grades represent the following scorings in % *

GRADE A - >75	
GRADE B - 51 TO 75	* School Status Grade
GRADE C - 26 TO 50	represents the total
GRADE D - 10 TO 25	enrollment of the
GRADE E - <10	school (Not %)

Note: The Values given in the brackets denote the difference between the Pre and Post Test Scores.
(For Example: If the Pre-Test Grade is 'C' and the Post-Test Grade is 'A', then the progress is +2)

SCHOOL GRADE - BB

Status Gr. B (0) Performance Gr. B (0)

OVERALL PERFORMANCE GRADES

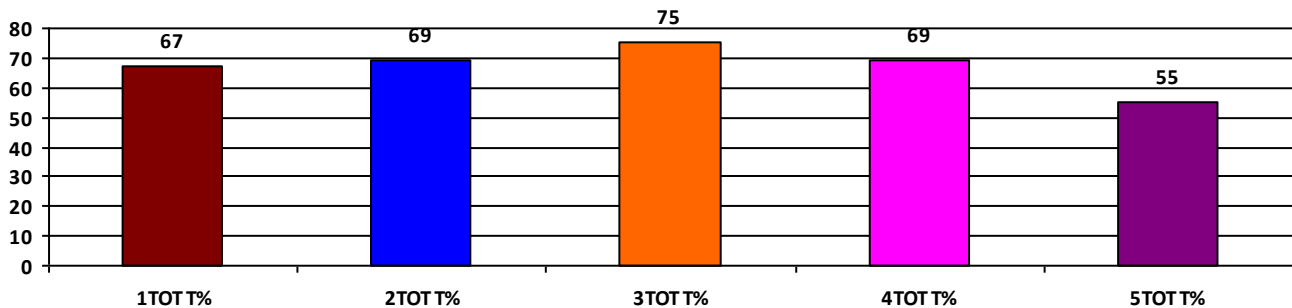
	Boys	Girls	Total
SCHOOL GR.	B	B	B
Diff. to Pre-Test	(+1)	(0)	(0)
DIST. GR.	B	B	B
STATE GR.	B	B	B

CLASSWISE APPEARED

DETAILS	I STD	II STD	III STD	IV STD	V STD
BOYS	8	5	11	6	4
GIRLS	4	3	8	5	4
TOTAL	12	8	19	11	8
Diff. to Pre-Test	(+1)	(-1)	(+1)	(0)	(+1)

CLASSWISE PERFORMANCE GRADES (% of marks)

DETAILS	I STD	II STD	III STD	IV STD	V STD
%	67	69	75	69	55
SCHOOL GR.	B	B	B	B	B
Diff. to Pre-Test	(0)	(0)	(+1)	(+1)	(0)
DIST. GR.	A	B	B	B	B
STATE GR.	A	B	B	B	B



GRADEWISE PERFORMANCE (NO. OF STUDENTS)

ENGLISH	1 Std	2 Std	3 Std	4 Std	5 Std	TAMIL	1 Std	2 Std	3 Std	4 Std	5 Std
GR. A	6	0	14	1	2	GR. A	5	3	11	4	2
GR. B	2	8	2	9	5	GR. B	4	5	5	7	2
GR. C	4	0	3	0	0	GR. C	2	0	1	0	3
GR. D	0	0	0	1	0	GR. D	1	0	2	0	0
GR. E	0	0	0	0	1	GR. E	0	0	0	0	1

DEAL POST TEST 2019-20 - SCHOOL REPORT CARD

PONDY
DIS Z3

34020205404 **GPS EDAYARPALAYAM**

All Grades represent the following scorings in % *

GRADE A - >75	* School Status Grade represents the total enrollment of the school (Not %)
GRADE B - 51 TO 75	
GRADE C - 26 TO 50	
GRADE D - 10 TO 25	
GRADE E - <10	

Note: The Values given in the brackets denote the difference between the Pre and Post Test Scores.
(For Example: If the Pre-Test Grade is 'C' and the Post-Test Grade is 'A', then the progress is +2)

SCHOOL GRADE - DA

Status Gr. D (0) Performance Gr. A(+1)

OVERALL PERFORMANCE GRADES

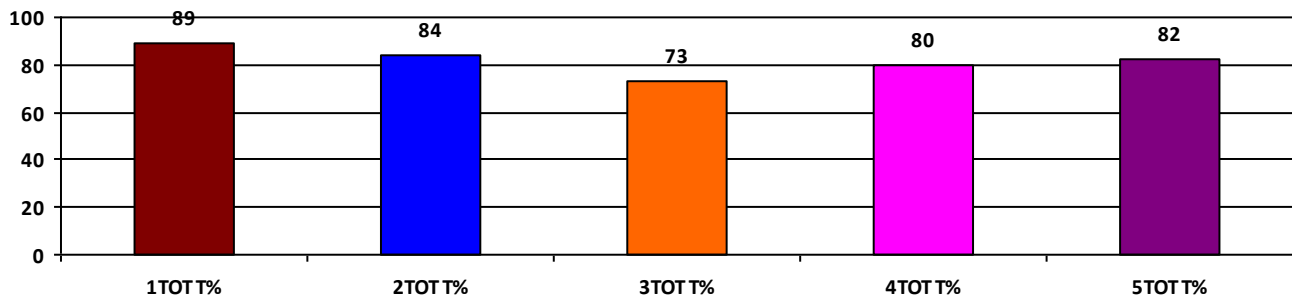
	Boys	Girls	Total
SCHOOL GR.	A	A	A
Diff. to Pre-Test	(+1)	(+1)	(+1)
DIST. GR.	B	B	B
STATE GR.	B	B	B

CLASSWISE APPEARED

DETAILS	I STD	II STD	III STD	IV STD	V STD
BOYS	1	2	2	3	0
GIRLS	1	1	2	1	4
TOTAL	2	3	4	4	4
Diff. to Pre-Test	(+1)	(0)	(0)	(0)	(0)

CLASSWISE PERFORMANCE GRADES (% of marks)

DETAILS	I STD	II STD	III STD	IV STD	V STD
%	89	84	73	80	82
SCHOOL GR.	A	A	B	A	A
Diff. to Pre-Test	(0)	(+1)	(0)	(+1)	(+1)
DIST. GR.	A	B	B	B	B
STATE GR.	A	B	B	B	B



GRADEWISE PERFORMANCE (NO. OF STUDENTS)

ENGLISH	1 Std	2 Std	3 Std	4 Std	5 Std	TAMIL	1 Std	2 Std	3 Std	4 Std	5 Std
GR. A	2	3	2	2	3	GR. A	2	2	2	4	3
GR. B	0	0	0	2	1	GR. B	0	1	2	0	1
GR. C	0	0	2	0	0	GR. C	0	0	0	0	0
GR. D	0	0	0	0	0	GR. D	0	0	0	0	0
GR. E	0	0	0	0	0	GR. E	0	0	0	0	0

DEAL POST TEST 2019-20 - SCHOOL REPORT CARD

PONDY
DIS Z3

34020205406 GPS PUDUKUPPAM(A)

All Grades represent the following scorings in % *

GRADE A - >75	
GRADE B - 51 TO 75	* School Status Grade
GRADE C - 26 TO 50	represents the total
GRADE D - 10 TO 25	enrollment of the
GRADE E - <10	school (Not %)

Note: The Values given in the brackets denote the difference between the Pre and Post Test Scores.
(For Example: If the Pre-Test Grade is 'C' and the Post-Test Grade is 'A', then the progress is +2)

SCHOOL GRADE - CA

Status Gr. C (0) Performance Gr. A(+1)

OVERALL PERFORMANCE GRADES

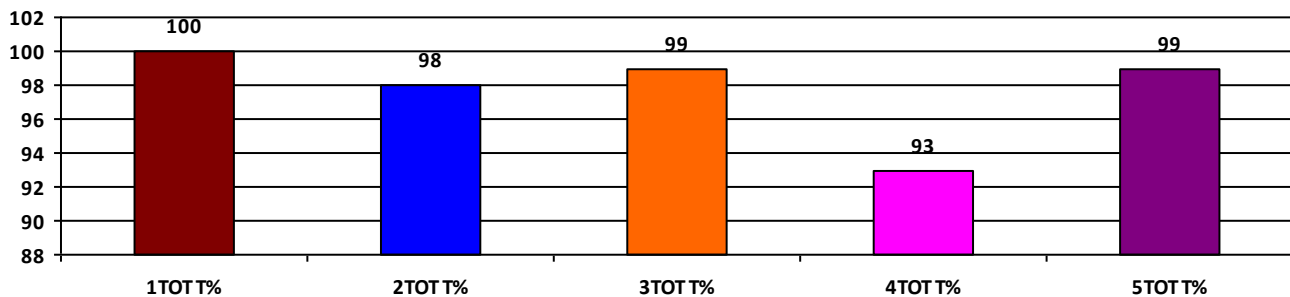
	Boys	Girls	Total
SCHOOL GR.	A	A	A
Diff. to Pre-Test	(+1)	(+1)	(+1)
DIST. GR.	B	B	B
STATE GR.	B	B	B

CLASSWISE APPEARED

DETAILS	I STD	II STD	III STD	IV STD	V STD
BOYS	7	3	1	7	3
GIRLS	2	4	3	6	2
TOTAL	9	7	4	13	5
Diff. to Pre-Test	(0)	(+1)	(0)	(0)	(0)

CLASSWISE PERFORMANCE GRADES (% of marks)

DETAILS	I STD	II STD	III STD	IV STD	V STD
%	100	98	99	93	99
SCHOOL GR.	A	A	A	A	A
Diff. to Pre-Test	(0)	(+1)	(0)	(+1)	(+1)
DIST. GR.	A	B	B	B	B
STATE GR.	A	B	B	B	B



GRADEWISE PERFORMANCE (NO. OF STUDENTS)

ENGLISH	1 Std	2 Std	3 Std	4 Std	5 Std	TAMIL	1 Std	2 Std	3 Std	4 Std	5 Std
GR. A	9	7	4	13	5	GR. A	9	7	4	13	5
GR. B	0	0	0	0	0	GR. B	0	0	0	0	0
GR. C	0	0	0	0	0	GR. C	0	0	0	0	0
GR. D	0	0	0	0	0	GR. D	0	0	0	0	0
GR. E	0	0	0	0	0	GR. E	0	0	0	0	0

DEAL POST TEST 2019-20 - SCHOOL REPORT CARD

PONDY
DIS Z3

34020205802 **GPS SELIAMEDU**

All Grades represent the following scorings in % *

GRADE A - >75	
GRADE B - 51 TO 75	* School Status Grade
GRADE C - 26 TO 50	represents the total
GRADE D - 10 TO 25	enrollment of the
GRADE E - <10	school (Not %)

Note: The Values given in the brackets denote the difference between the Pre and Post Test Scores.
(For Example: If the Pre-Test Grade is 'C' and the Post-Test Grade is 'A', then the progress is +2)

SCHOOL GRADE - BB

Status Gr. B (-1) Performance Gr. B(+1)

OVERALL PERFORMANCE GRADES

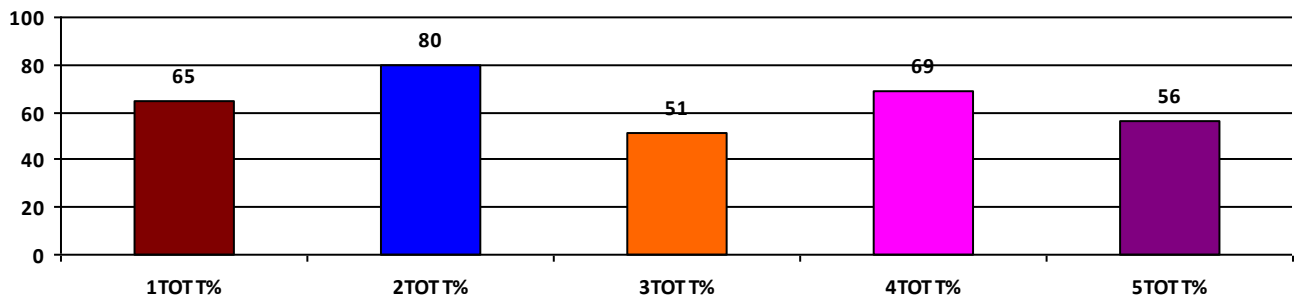
	Boys	Girls	Total
SCHOOL GR.	B	B	B
Diff. to Pre-Test	(+1)	(+1)	(+1)
DIST. GR.	B	B	B
STATE GR.	B	B	B

CLASSWISE APPEARED

DETAILS	I STD	II STD	III STD	IV STD	V STD
BOYS	2	1	9	9	15
GIRLS	1	4	13	7	14
TOTAL	3	5	22	16	29
Diff. to Pre-Test	(0)	(0)	(+2)	(+2)	(+1)

CLASSWISE PERFORMANCE GRADES (% of marks)

DETAILS	I STD	II STD	III STD	IV STD	V STD
%	65	80	51	69	56
SCHOOL GR.	B	A	B	B	B
Diff. to Pre-Test	(0)	(+2)	(+1)	(+1)	(+1)
DIST. GR.	A	B	B	B	B
STATE GR.	A	B	B	B	B



GRADEWISE PERFORMANCE (NO. OF STUDENTS)

ENGLISH	1 Std	2 Std	3 Std	4 Std	5 Std	TAMIL	1 Std	2 Std	3 Std	4 Std	5 Std
GR. A	0	3	5	5	6	GR. A	1	3	4	10	9
GR. B	2	2	5	9	11	GR. B	2	2	8	4	9
GR. C	1	0	6	2	6	GR. C	0	0	8	1	4
GR. D	0	0	5	0	5	GR. D	0	0	1	1	5
GR. E	0	0	1	0	1	GR. E	0	0	1	0	2

DEAL POST TEST 2019-20 - SCHOOL REPORT CARD

PONDY
DIS Z3

34020205804 GPS SELIAMEDUPET

All Grades represent the following scorings in % *

GRADE A - >75	
GRADE B - 51 TO 75	* School Status Grade
GRADE C - 26 TO 50	represents the total
GRADE D - 10 TO 25	enrollment of the
GRADE E - <10	school (Not %)

Note: The Values given in the brackets denote the difference between the Pre and Post Test Scores.
(For Example: If the Pre-Test Grade is 'C' and the Post-Test Grade is 'A', then the progress is +2)

SCHOOL GRADE - DA

Status Gr. D (0) Performance Gr. A (0)

OVERALL PERFORMANCE GRADES

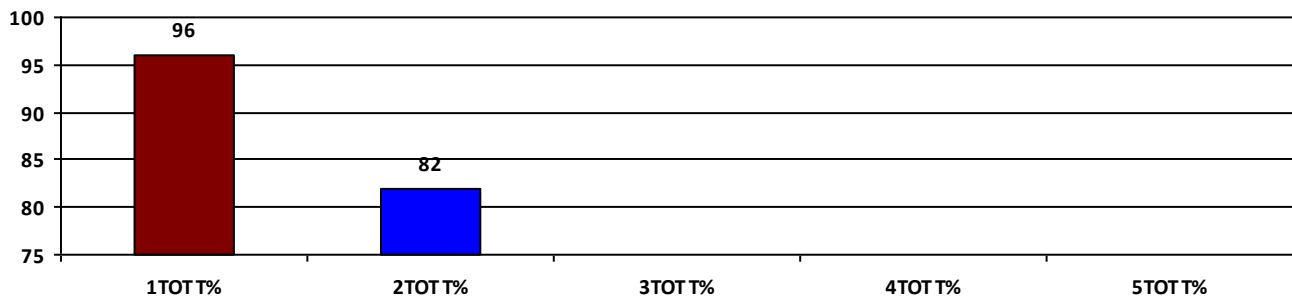
	Boys	Girls	Total
SCHOOL GR.	A	A	A
Diff. to Pre-Test	(0)	(0)	(0)
DIST. GR.	B	B	B
STATE GR.	B	B	B

CLASSWISE APPEARED

DETAILS	I STD	II STD	III STD	IV STD	V STD
BOYS	2	3	0	0	0
GIRLS	2	3	0	0	0
TOTAL	4	6	0	0	0
Diff. to Pre-Test	(0)	(0)	(0)	(0)	(0)

CLASSWISE PERFORMANCE GRADES (% of marks)

DETAILS	I STD	II STD	III STD	IV STD	V STD
%	96	82	NA	NA	NA
SCHOOL GR.	A	A	NA	NA	NA
Diff. to Pre-Test	(0)	(0)	(+8)	(+8)	(+8)
DIST. GR.	A	B	B	B	B
STATE GR.	A	B	B	B	B



GRADEWISE PERFORMANCE (NO. OF STUDENTS)

ENGLISH	1 Std	2 Std	3 Std	4 Std	5 Std	TAMIL	1 Std	2 Std	3 Std	4 Std	5 Std
GR. A	4	3	0	0	0	GR. A	4	4	0	0	0
GR. B	0	3	0	0	0	GR. B	0	1	0	0	0
GR. C	0	0	0	0	0	GR. C	0	1	0	0	0
GR. D	0	0	0	0	0	GR. D	0	0	0	0	0
GR. E	0	0	0	0	0	GR. E	0	0	0	0	0

DEAL POST TEST 2019-20 - SCHOOL REPORT CARD

PONDY
DIS Z3

34020205806 GPS ADINGAPATTU-PET

All Grades represent the following scorings in % *

GRADE A - >75	
GRADE B - 51 TO 75	* School Status Grade
GRADE C - 26 TO 50	represents the total
GRADE D - 10 TO 25	enrollment of the
GRADE E - <10	school (Not %)

Note: The Values given in the brackets denote the difference between the Pre and Post Test Scores.
(For Example: If the Pre-Test Grade is 'C' and the Post-Test Grade is 'A', then the progress is +2)

SCHOOL GRADE - DA

Status Gr. D (0) Performance Gr. A (0)

OVERALL PERFORMANCE GRADES

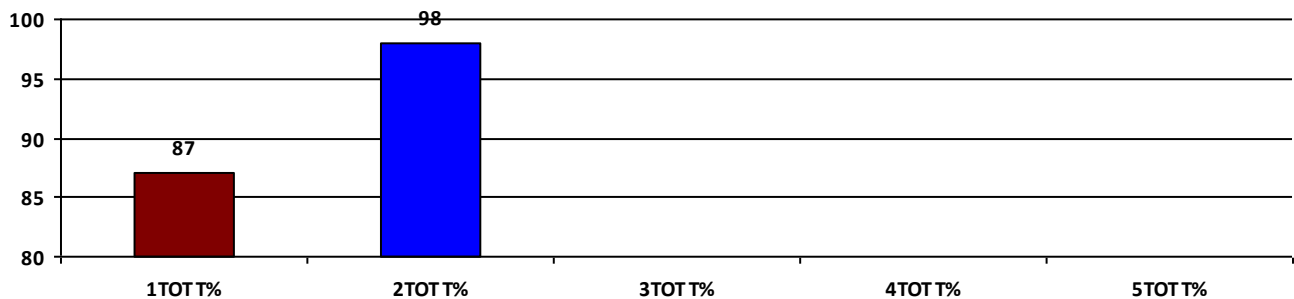
	Boys	Girls	Total
SCHOOL GR.	A	A	A
Diff. to Pre-Test	(0)	(0)	(0)
DIST. GR.	B	B	B
STATE GR.	B	B	B

CLASSWISE APPEARED

DETAILS	I STD	II STD	III STD	IV STD	V STD
BOYS	4	1	0	0	0
GIRLS	3	2	0	0	0
TOTAL	7	3	0	0	0
Diff. to Pre-Test	(0)	(0)	(0)	(0)	(0)

CLASSWISE PERFORMANCE GRADES (% of marks)

DETAILS	I STD	II STD	III STD	IV STD	V STD
%	87	98	NA	NA	NA
SCHOOL GR.	A	A	NA	NA	NA
Diff. to Pre-Test	(0)	(0)	(+8)	(+8)	(+8)
DIST. GR.	A	B	B	B	B
STATE GR.	A	B	B	B	B



GRADEWISE PERFORMANCE (NO. OF STUDENTS)

ENGLISH	1 Std	2 Std	3 Std	4 Std	5 Std	TAMIL	1 Std	2 Std	3 Std	4 Std	5 Std
GR. A	5	3	0	0	0	GR. A	5	3	0	0	0
GR. B	1	0	0	0	0	GR. B	2	0	0	0	0
GR. C	1	0	0	0	0	GR. C	0	0	0	0	0
GR. D	0	0	0	0	0	GR. D	0	0	0	0	0
GR. E	0	0	0	0	0	GR. E	0	0	0	0	0

DEAL POST TEST 2019-20 - SCHOOL REPORT CARD

PONDY
DIS Z3

34020205807 GPS KUDIYURPPAPALAYAM

All Grades represent the following scorings in % *

GRADE A - >75	* School Status Grade represents the total enrollment of the school (Not %)
GRADE B - 51 TO 75	
GRADE C - 26 TO 50	
GRADE D - 10 TO 25	
GRADE E - <10	

Note: The Values given in the brackets denote the difference between the Pre and Post Test Scores.
(For Example: If the Pre-Test Grade is 'C' and the Post-Test Grade is 'A', then the progress is +2)

SCHOOL GRADE - EA

Status Gr. E (0) Performance Gr. A(+1)

OVERALL PERFORMANCE GRADES

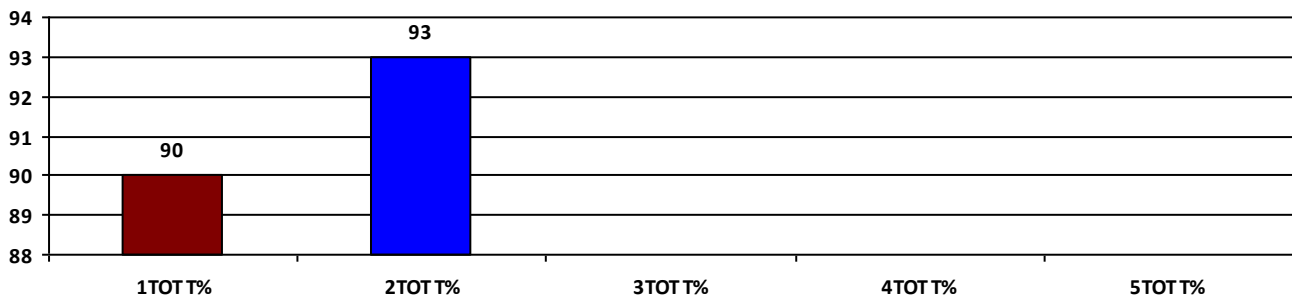
	Boys	Girls	Total
SCHOOL GR.	A	A	A
Diff. to Pre-Test	(+1)	(+1)	(+1)
DIST. GR.	B	B	B
STATE GR.	B	B	B

CLASSWISE APPEARED

DETAILS	I STD	II STD	III STD	IV STD	V STD
BOYS	1	1	0	0	0
GIRLS	0	2	0	0	0
TOTAL	1	3	0	0	0
Diff. to Pre-Test	(0)	(0)	(0)	(0)	(0)

CLASSWISE PERFORMANCE GRADES (% of marks)

DETAILS	I STD	II STD	III STD	IV STD	V STD
%	90	93	NA	NA	NA
SCHOOL GR.	A	A	NA	NA	NA
Diff. to Pre-Test	(+1)	(+1)	(+8)	(+8)	(+8)
DIST. GR.	A	B	B	B	B
STATE GR.	A	B	B	B	B



GRADEWISE PERFORMANCE (NO. OF STUDENTS)

ENGLISH	1 Std	2 Std	3 Std	4 Std	5 Std	TAMIL	1 Std	2 Std	3 Std	4 Std	5 Std
GR. A	1	3	0	0	0	GR. A	1	3	0	0	0
GR. B	0	0	0	0	0	GR. B	0	0	0	0	0
GR. C	0	0	0	0	0	GR. C	0	0	0	0	0
GR. D	0	0	0	0	0	GR. D	0	0	0	0	0
GR. E	0	0	0	0	0	GR. E	0	0	0	0	0

DEAL POST TEST 2019-20 - SCHOOL REPORT CARD

PONDY
DIS Z3

34020206601 **GPS THAVALAKUPPAM**

All Grades represent the following scorings in % *

GRADE A - >75	* School Status Grade represents the total enrollment of the school (Not %)
GRADE B - 51 TO 75	
GRADE C - 26 TO 50	
GRADE D - 10 TO 25	
GRADE E - <10	

Note: The Values given in the brackets denote the difference between the Pre and Post Test Scores.
(For Example: If the Pre-Test Grade is 'C' and the Post-Test Grade is 'A', then the progress is +2)

SCHOOL GRADE - CA

Status Gr. C (0) Performance Gr. A(+1)

OVERALL PERFORMANCE GRADES

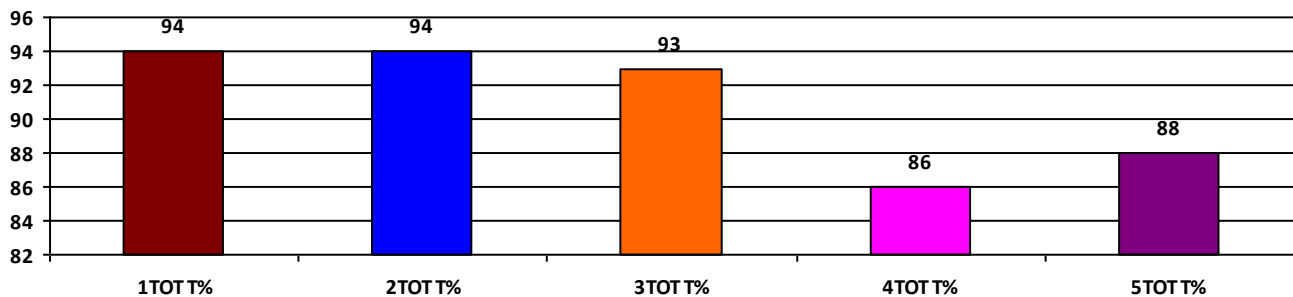
	Boys	Girls	Total
SCHOOL GR.	A	A	A
Diff. to Pre-Test	(+1)	(+1)	(+1)
DIST. GR.	B	B	B
STATE GR.	B	B	B

CLASSWISE APPEARED

DETAILS	I STD	II STD	III STD	IV STD	V STD
BOYS	4	3	4	6	3
GIRLS	5	4	6	4	7
TOTAL	9	7	10	10	10
Diff. to Pre-Test	(+2)	(0)	(+1)	(0)	(0)

CLASSWISE PERFORMANCE GRADES (% of marks)

DETAILS	I STD	II STD	III STD	IV STD	V STD
%	94	94	93	86	88
SCHOOL GR.	A	A	A	A	A
Diff. to Pre-Test	(+1)	(+1)	(+1)	(0)	(+1)
DIST. GR.	A	B	B	B	B
STATE GR.	A	B	B	B	B



GRADEWISE PERFORMANCE (NO. OF STUDENTS)

ENGLISH	1 Std	2 Std	3 Std	4 Std	5 Std	TAMIL	1 Std	2 Std	3 Std	4 Std	5 Std
GR. A	9	7	10	7	8	GR. A	9	7	10	7	8
GR. B	0	0	0	3	2	GR. B	0	0	0	3	2
GR. C	0	0	0	0	0	GR. C	0	0	0	0	0
GR. D	0	0	0	0	0	GR. D	0	0	0	0	0
GR. E	0	0	0	0	0	GR. E	0	0	0	0	0

DEAL POST TEST 2019-20 - SCHOOL REPORT CARD

PONDY
DIS Z3

34020206604 **GPS THANAMPALAYAM**

All Grades represent the following scorings in % *

GRADE A - >75	* School Status Grade represents the total enrollment of the school (Not %)
GRADE B - 51 TO 75	
GRADE C - 26 TO 50	
GRADE D - 10 TO 25	
GRADE E - <10	

Note: The Values given in the brackets denote the difference between the Pre and Post Test Scores.
(For Example: If the Pre-Test Grade is 'C' and the Post-Test Grade is 'A', then the progress is +2)

SCHOOL GRADE - BB

Status Gr. B (0) Performance Gr. B (0)

OVERALL PERFORMANCE GRADES

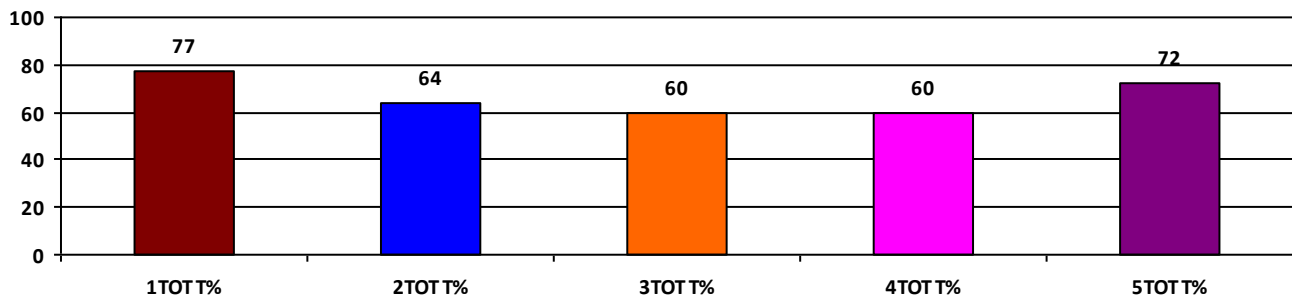
	Boys	Girls	Total
SCHOOL GR.	B	B	B
Diff. to Pre-Test	(+1)	(0)	(0)
DIST. GR.	B	B	B
STATE GR.	B	B	B

CLASSWISE APPEARED

DETAILS	I STD	II STD	III STD	IV STD	V STD
BOYS	3	9	7	4	9
GIRLS	5	6	11	7	8
TOTAL	8	15	18	11	17
Diff. to Pre-Test	(-1)	(0)	(-1)	(-1)	(0)

CLASSWISE PERFORMANCE GRADES (% of marks)

DETAILS	I STD	II STD	III STD	IV STD	V STD
%	77	64	60	60	72
SCHOOL GR.	A	B	B	B	B
Diff. to Pre-Test	(+1)	(0)	(+1)	(0)	(0)
DIST. GR.	A	B	B	B	B
STATE GR.	A	B	B	B	B



GRADEWISE PERFORMANCE (NO. OF STUDENTS)

ENGLISH	1 Std	2 Std	3 Std	4 Std	5 Std	TAMIL	1 Std	2 Std	3 Std	4 Std	5 Std
GR. A	2	5	3	3	9	GR. A	7	7	9	6	11
GR. B	5	5	7	5	4	GR. B	1	3	6	3	5
GR. C	1	4	5	1	4	GR. C	0	4	1	0	1
GR. D	0	1	3	0	0	GR. D	0	1	1	0	0
GR. E	0	0	0	2	0	GR. E	0	0	1	2	0

DEAL POST TEST 2019-20 - SCHOOL REPORT CARD

PONDY
DIS Z3

34020207401 **GPS ARATCHIKUPPAM**

All Grades represent the following scorings in % *

GRADE A - >75	
GRADE B - 51 TO 75	* School Status Grade
GRADE C - 26 TO 50	represents the total
GRADE D - 10 TO 25	enrollment of the
GRADE E - <10	school (Not %)

Note: The Values given in the brackets denote the difference between the Pre and Post Test Scores.
(For Example: If the Pre-Test Grade is 'C' and the Post-Test Grade is 'A', then the progress is +2)

SCHOOL GRADE - CB

Status Gr. C (0) Performance Gr. B (0)

OVERALL PERFORMANCE GRADES

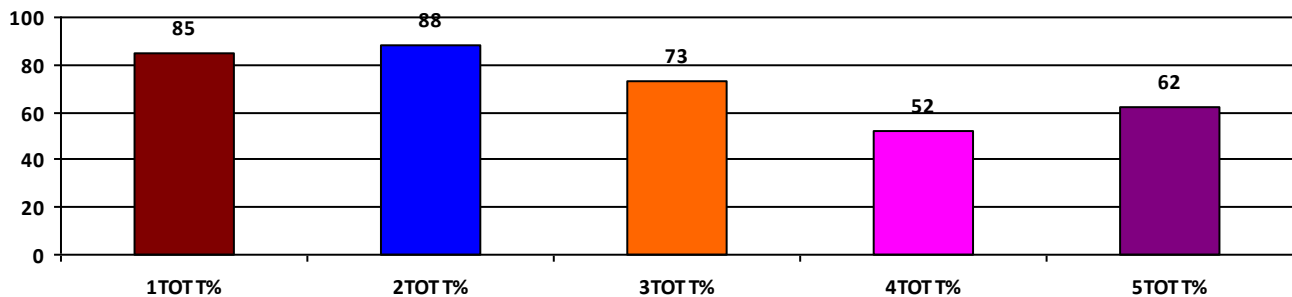
	Boys	Girls	Total
SCHOOL GR.	B	B	B
Diff. to Pre-Test	(0)	(0)	(0)
DIST. GR.	B	B	B
STATE GR.	B	B	B

CLASSWISE APPEARED

DETAILS	I STD	II STD	III STD	IV STD	V STD
BOYS	5	1	5	4	9
GIRLS	1	8	2	3	7
TOTAL	6	9	7	7	16
Diff. to Pre-Test	(0)	(0)	(0)	(+1)	(0)

CLASSWISE PERFORMANCE GRADES (% of marks)

DETAILS	I STD	II STD	III STD	IV STD	V STD
%	85	88	73	52	62
SCHOOL GR.	A	A	B	B	B
Diff. to Pre-Test	(+1)	(0)	(0)	(0)	(0)
DIST. GR.	A	B	B	B	B
STATE GR.	A	B	B	B	B



GRADEWISE PERFORMANCE (NO. OF STUDENTS)

ENGLISH	1 Std	2 Std	3 Std	4 Std	5 Std	TAMIL	1 Std	2 Std	3 Std	4 Std	5 Std
GR. A	3	8	4	0	3	GR. A	6	8	4	2	6
GR. B	3	1	2	4	5	GR. B	0	1	3	3	8
GR. C	0	0	1	1	8	GR. C	0	0	0	1	2
GR. D	0	0	0	1	0	GR. D	0	0	0	0	0
GR. E	0	0	0	1	0	GR. E	0	0	0	1	0

DEAL POST TEST 2019-20 - SCHOOL REPORT CARD

PONDY
DIS Z3

34020207501 **GPS KORAVELIMEDU**

All Grades represent the following scorings in % *

GRADE A - >75	
GRADE B - 51 TO 75	* School Status Grade
GRADE C - 26 TO 50	represents the total
GRADE D - 10 TO 25	enrollment of the
GRADE E - <10	school (Not %)

Note: The Values given in the brackets denote the difference between the Pre and Post Test Scores.
(For Example: If the Pre-Test Grade is 'C' and the Post-Test Grade is 'A', then the progress is +2)

SCHOOL GRADE - AA

Status Gr. A (0)	Performance Gr. A(+1)
------------------	-----------------------

OVERALL PERFORMANCE GRADES

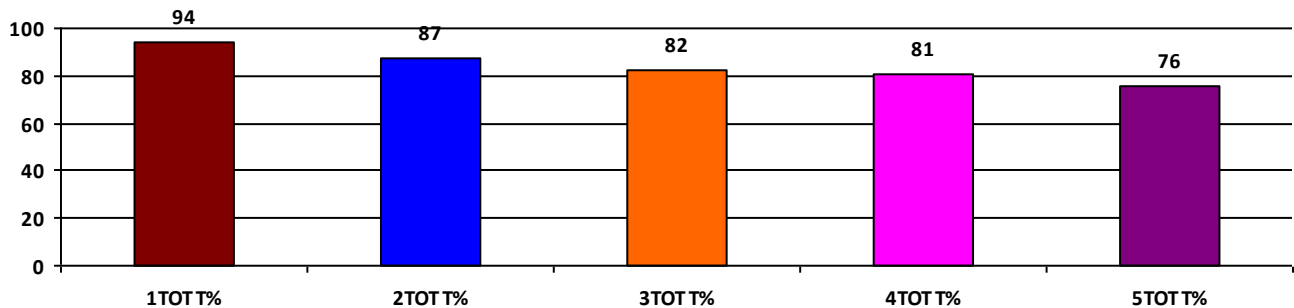
	Boys	Girls	Total
SCHOOL GR.	B	A	A
Diff. to Pre-Test	(0)	(+1)	(+1)
DIST. GR.	B	B	B
STATE GR.	B	B	B

CLASSWISE APPEARED

DETAILS	I STD	II STD	III STD	IV STD	V STD
BOYS	6	8	11	11	14
GIRLS	5	10	10	6	14
TOTAL	11	18	21	17	28
Diff. to Pre-Test	(-1)	(0)	(+1)	(0)	(+1)

CLASSWISE PERFORMANCE GRADES (% of marks)

DETAILS	I STD	II STD	III STD	IV STD	V STD
%	94	87	82	81	76
SCHOOL GR.	A	A	A	A	A
Diff. to Pre-Test	(0)	(0)	(+2)	(+1)	(+1)
DIST. GR.	A	B	B	B	B
STATE GR.	A	B	B	B	B



GRADEWISE PERFORMANCE (NO. OF STUDENTS)

ENGLISH	1 Std	2 Std	3 Std	4 Std	5 Std	TAMIL	1 Std	2 Std	3 Std	4 Std	5 Std
GR. A	11	15	14	14	19	GR. A	10	15	15	13	15
GR. B	0	2	6	1	6	GR. B	1	1	4	1	9
GR. C	0	1	0	2	1	GR. C	0	1	1	3	2
GR. D	0	0	0	0	1	GR. D	0	1	0	0	1
GR. E	0	0	1	0	1	GR. E	0	0	1	0	1

DEAL POST TEST 2019-20 - SCHOOL REPORT CARD

PONDY
DIS Z3

34020207503 **GPS KRISHNAVARAM**

All Grades represent the following scorings in % *

GRADE A - >75	* School Status Grade represents the total enrollment of the school (Not %)
GRADE B - 51 TO 75	
GRADE C - 26 TO 50	
GRADE D - 10 TO 25	
GRADE E - <10	

Note: The Values given in the brackets denote the difference between the Pre and Post Test Scores.
(For Example: If the Pre-Test Grade is 'C' and the Post-Test Grade is 'A', then the progress is +2)

SCHOOL GRADE - CA

Status Gr. C (0) Performance Gr. A(+2)

OVERALL PERFORMANCE GRADES

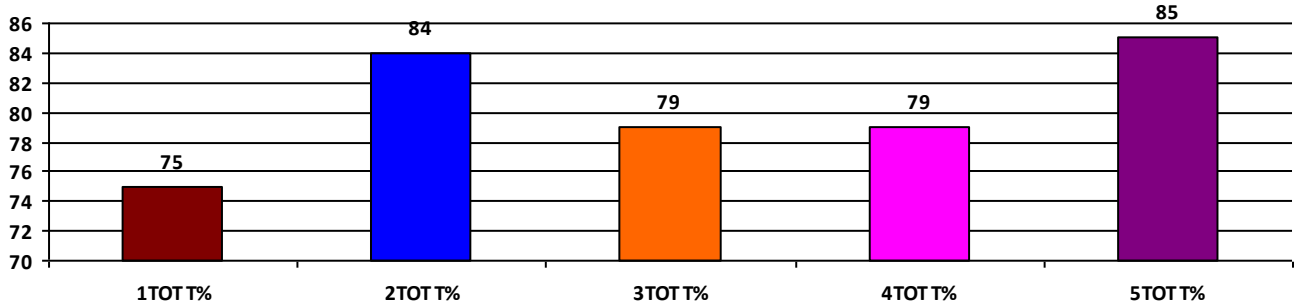
	Boys	Girls	Total
SCHOOL GR.	A	A	A
Diff. to Pre-Test	(+2)	(+2)	(+2)
DIST. GR.	B	B	B
STATE GR.	B	B	B

CLASSWISE APPEARED

DETAILS	I STD	II STD	III STD	IV STD	V STD
BOYS	2	7	5	4	6
GIRLS	1	4	7	6	5
TOTAL	3	11	12	10	11
Diff. to Pre-Test	(0)	(-1)	(0)	(0)	(0)

CLASSWISE PERFORMANCE GRADES (% of marks)

DETAILS	I STD	II STD	III STD	IV STD	V STD
%	75	84	79	79	85
SCHOOL GR.	B	A	A	A	A
Diff. to Pre-Test	(0)	(+2)	(+2)	(+2)	(+2)
DIST. GR.	A	B	B	B	B
STATE GR.	A	B	B	B	B



GRADEWISE PERFORMANCE (NO. OF STUDENTS)

ENGLISH	1 Std	2 Std	3 Std	4 Std	5 Std	TAMIL	1 Std	2 Std	3 Std	4 Std	5 Std
GR. A	1	7	7	6	8	GR. A	2	9	7	7	7
GR. B	2	4	4	2	3	GR. B	1	1	5	3	3
GR. C	0	0	1	2	0	GR. C	0	1	0	0	1
GR. D	0	0	0	0	0	GR. D	0	0	0	0	0
GR. E	0	0	0	0	0	GR. E	0	0	0	0	0